

# Workplace Designs - Showroom

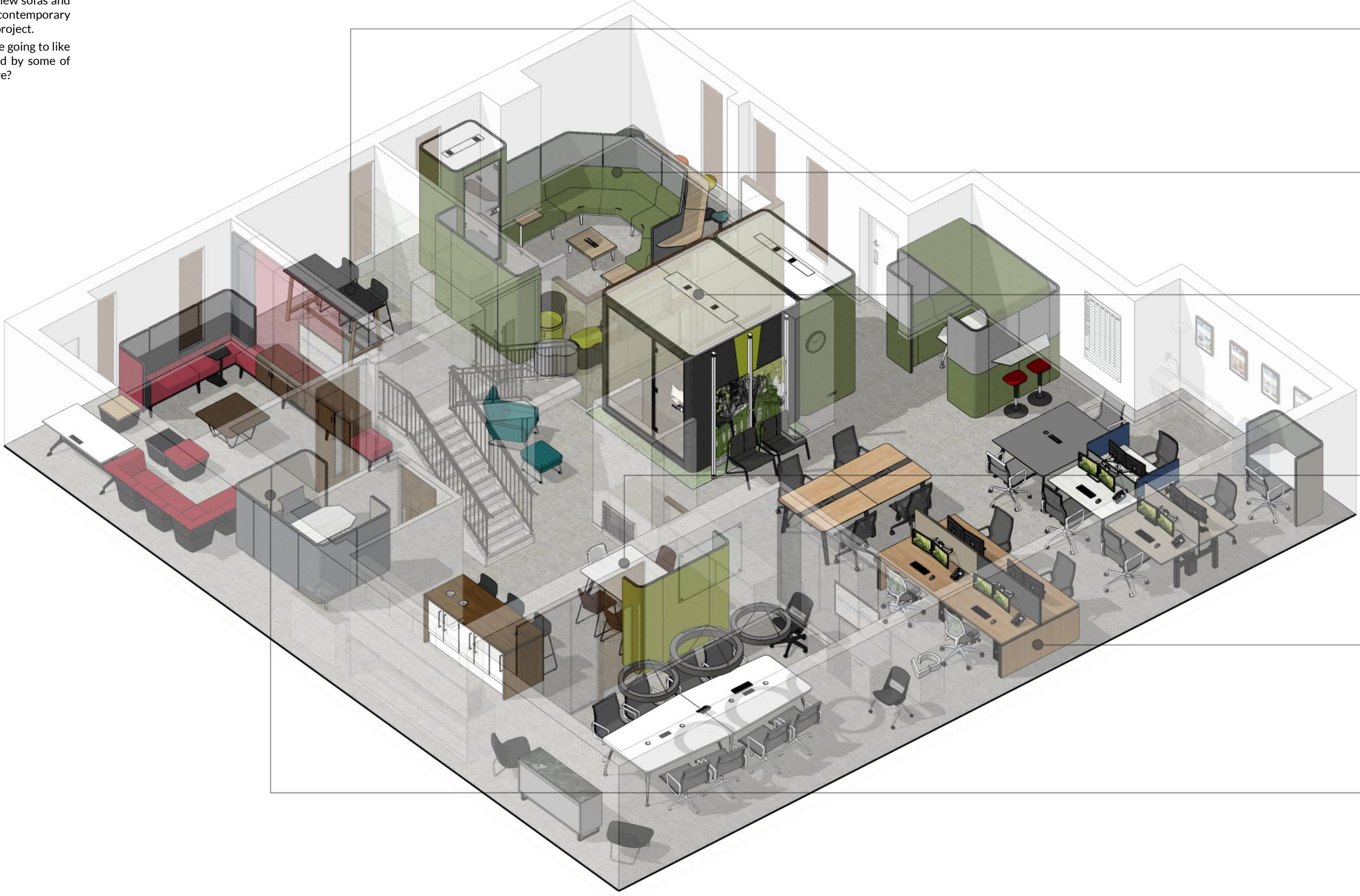
## New Generation Products

Visit our newly renovated showroom and see our popular designs in-person and take a seat on our comfy new sofas and popular chairs. The selection of colourful and contemporary pieces will help inspire your next interior design project.

If, like us, you're obsessive about furniture, you're going to like what you see. Affordable, stylish designs crafted by some of the best makers in the business. What's not to love?

### OUR SHOWROOM SERVICES

-  TEA & COFFEE
-  PRODUCTS ON DISPLAY
-  FABRIC SWATCHES
-  INSPIRATION
-  DESIGN & STYLING ADVICE
-  DESIGN CONSULTANCY

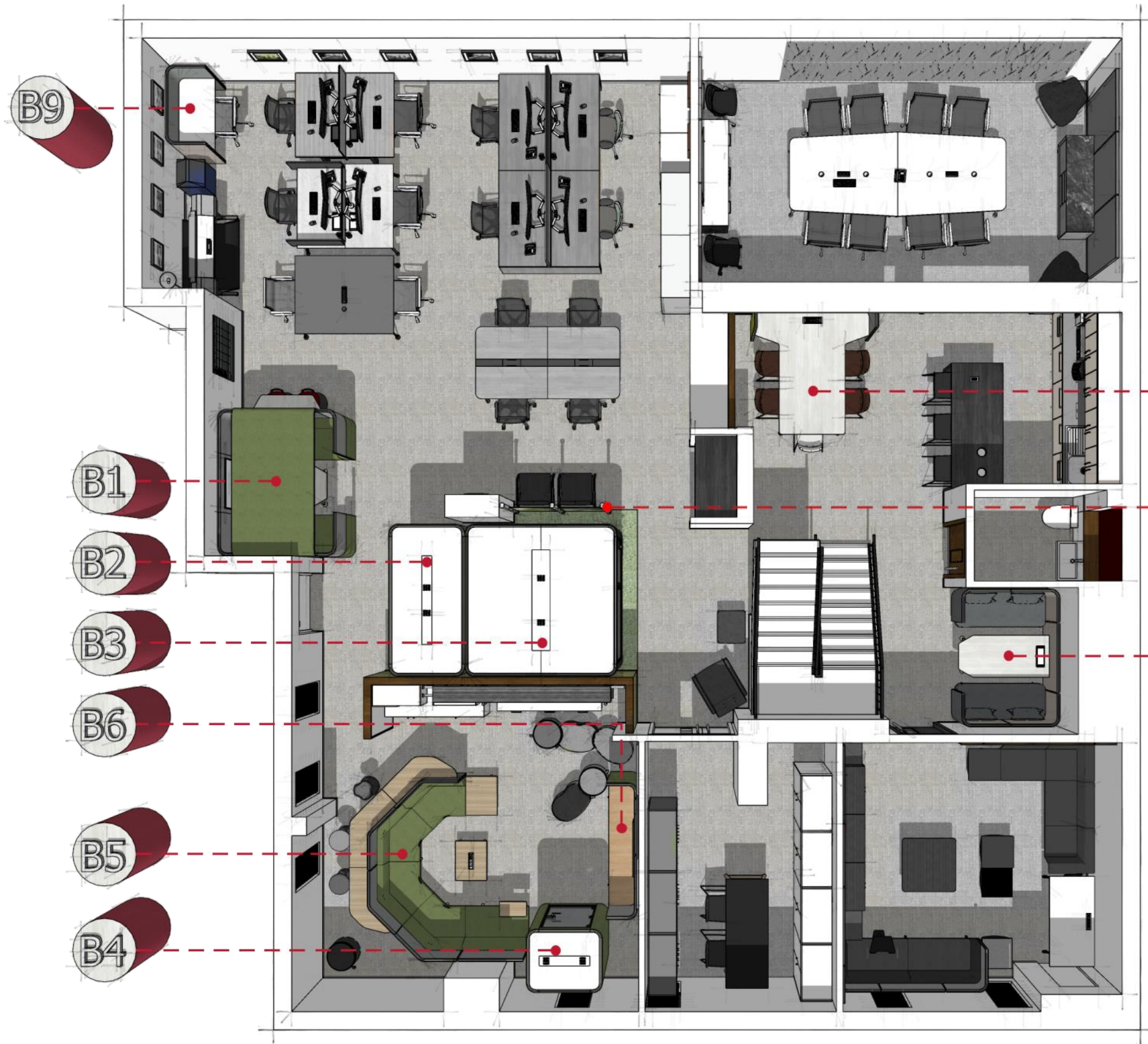


### OUR POPULAR SELLERS

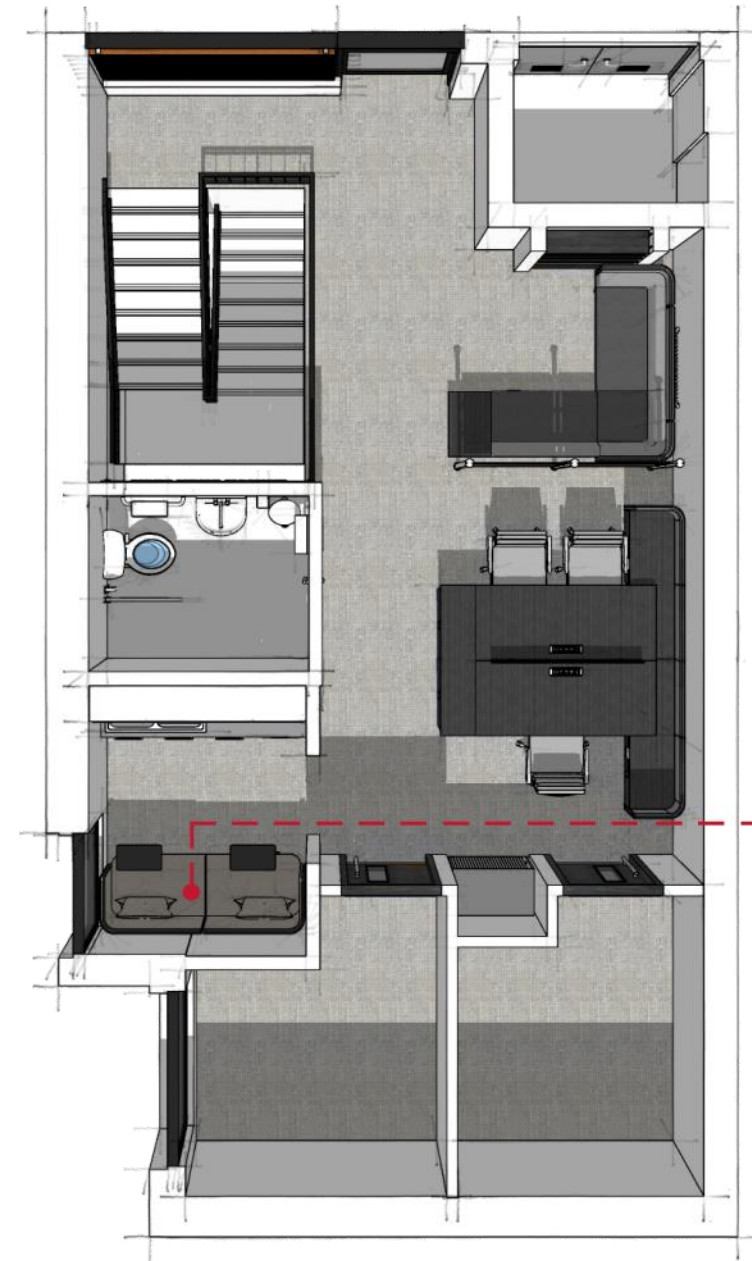


Workplace Designs

Architecture | Project Consultancy | Furniture | CAD & Graphics



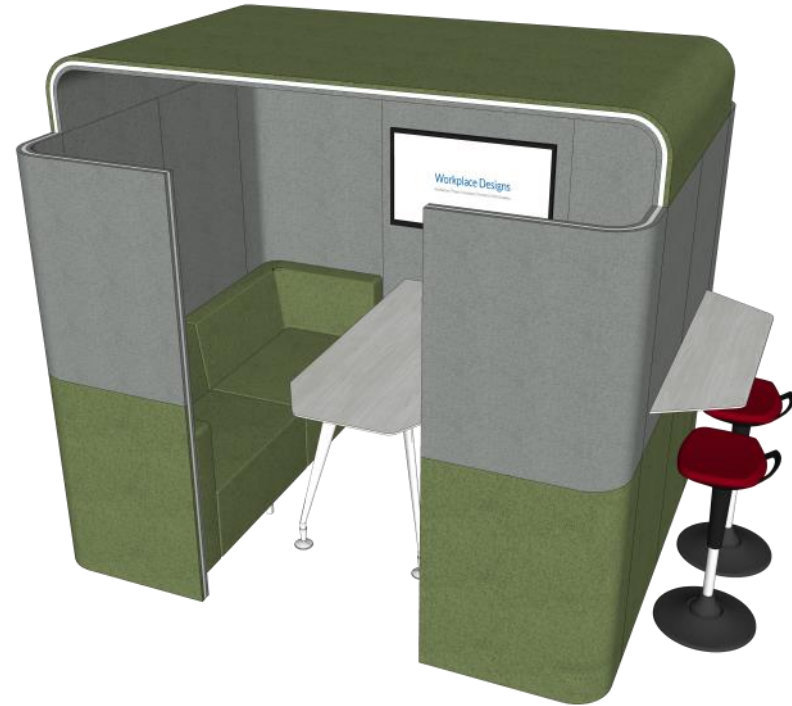
Main Floor Area



Reception Floor Area

- B1 Meeting Booth MB01
- B2 Quiet Pod QTO2
- B3 Quiet Pod QTO4
- B4 Quiet Pod QTO1
- B5 Collaboration Seating
- B6 Collaboration Media
- B7 AV HUB
- B8 Meeting Booth MB02
- B9 Study Booth
- B10 Sofa Booth
- B11 FTC Privacy Screen

**B1 Meeting Booth - MB01**  
RRP: £6,995.00 +vat



The Meeting Booth is a completely different option for conducting small meetings without completely losing contact with the office surroundings due to its closed off entrance, yet keeping a welcoming vibe to the booth.

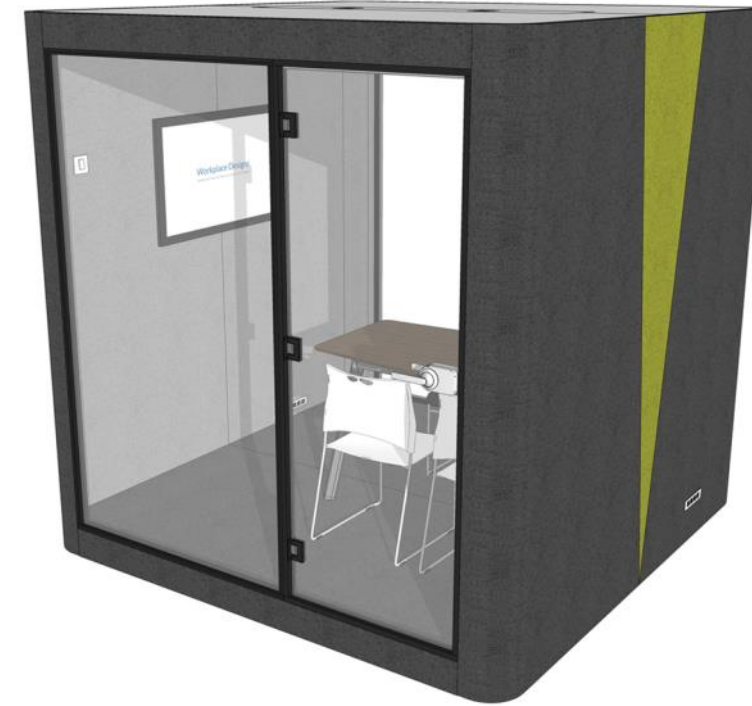
Equipped with two 2-seater sofas, (optional 3-seater sofas) and an integrated (or free-standing) meeting table with incorporated built-in power within the screen or the table. With the option of a built in monitor bracket and HDMI/DPort & power cables to run within the screen/framework, it provides a great presentation opportunity

There is also the option for a shallow 'high' table outside the pod for 2 stools as an addition - again with power if required.

Complete with an acoustic roof with integral LED lighting, this piece is not just a meeting area but an agile workspace for team members to enjoy.



**B3 Quiet Meeting Pod - QT04**  
RRP: £8,995.00 +vat

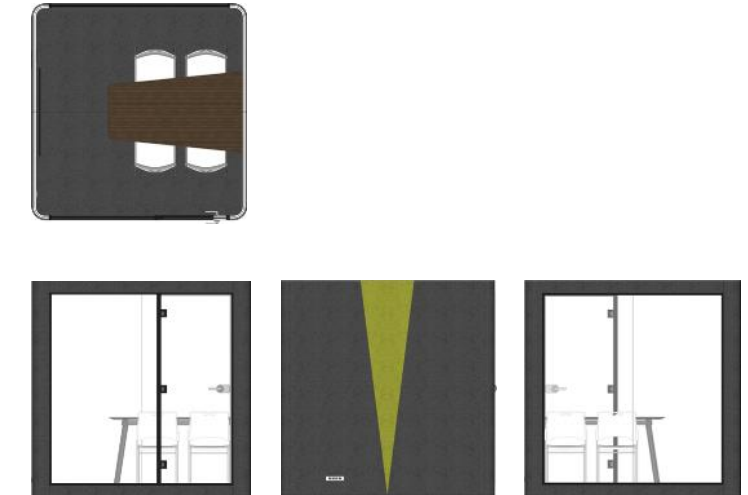


With an acoustic feature, the Quiet Meeting Pod QT04 offers an area without any costly renovation to the existing office interior, providing a flexible solution for effective space planning. This Pod significantly reducing background noise so that short meetings can take place with limited external distractions.

Built with a black, aluminium frame, with tempered glass and fabric finishes to all surfaces, as well as waterproof carpet flooring.

Equipped with LED lighting and ventilation system, with an optional smart office system, media screen, free-standing or integrated desk. Electric roller blinds can be fitted which can be controlled, as well as the LED lighting & ventilation via a mobile app. It's a next-generation work hub that accommodates the digital savvy.

The room layout can be reconfigured to suit any company style, & user demand, by replacing the meeting table with sofa sets, it turns this meeting area into relaxing breakout area, perfect for impromptu, informal meetings.



**B2 Quiet Meeting Pod - QT02**  
RRP: £6,995.00 +vat



With an acoustic feature, the Quiet Meeting Pod QT02 offers a conducive space for face-to-face communication by significantly reducing background noise and distractions from the task in hand.

Built with a black, aluminium frame, with tempered glass and fabric finishes to all surfaces, as well as waterproof carpet flooring. Power outlets and USB ports can be found on both sides of the wall panels to support laptops or tablets use efficiently.

Equipped with touch switch LED lighting and ventilation system, with an optional smart office system, media screen, free-standing or integrated desk. Electronic roller blinds can be fitted which can be controlled, as well as the LED lighting & ventilation via a mobile app. It's a next-generation work hub that accommodates the digital savvy.

Optional table shapes, worktop finishes, a selection interior and exterior fabric colour choices are available to suite any company style and needs.

The Quiet Pod is perfect for creating a private space for collaboration even in a compact office environment.



**B4 Quiet Meeting Pod - QT01**  
RRP: £4,495.00 +vat



The QT01 single person booth provides complete privacy and a retreat from the disruption of open office space, where you can use it as a quiet focus area for deep thinking and concentrated work, or having a short telecoms discussion on the phone or with your laptop or table device.

With it's acoustic features, the QT01 offers a conducive space for personal communication by significantly reducing background noise and distractions from the task in hand.

Built with a black, aluminium frame, with tempered glass and fabric finishes to all surfaces, as well as waterproof carpet flooring. Power outlets and USB ports can be found on both sides of the wall panels to support laptops or tablets use efficiently.

Equipped with touch switch LED lighting and ventilation system, with an optional smart office system, integrated desk. It's a next-generation work hub that accommodates the digital savvy.

The Quiet Pod is perfect for creating a private space for collaboration even in a compact office environment. It's attractive and distinctive design would enhance any modern office built for it's agile workforce.



**B5** **Collaboration Seating**  
RRP: £5,995.00 +vat

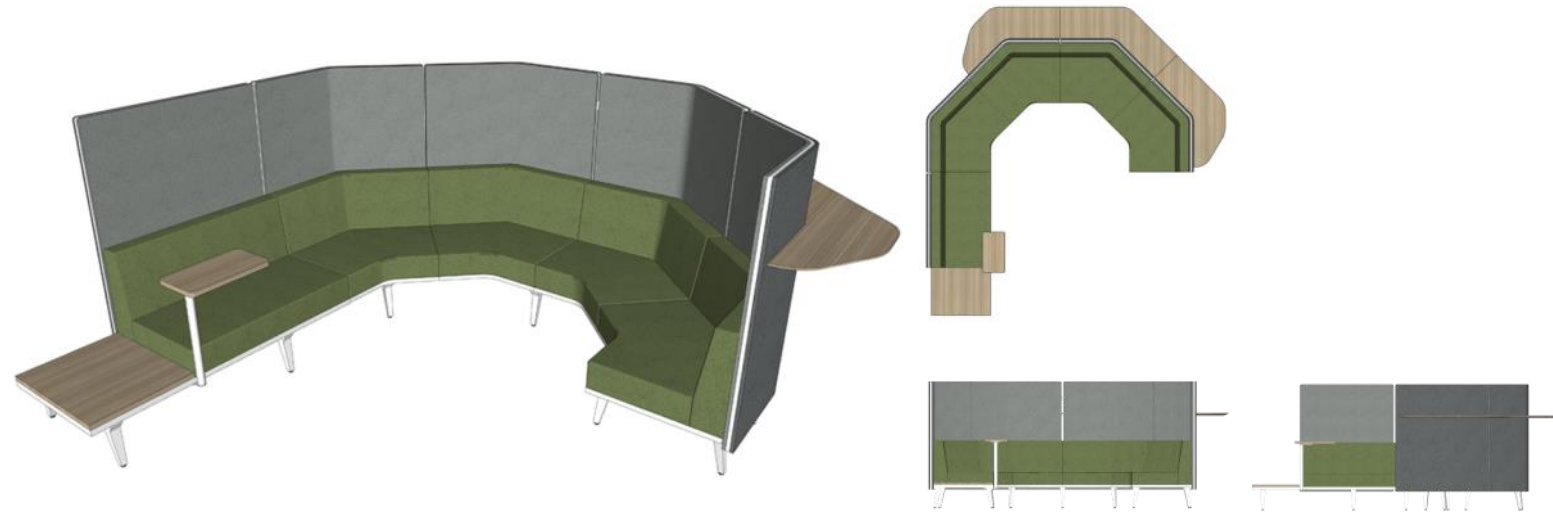
Break away from the stereotypical impression of a waiting lounge, the Collaboration Seating provides a flexible arrangement and along with its modern, sharp design, it flatters distinct office styles and needs.

Equipped with an elevated acoustic panel, it can be an ideal relaxing hub, as well as a stress-free zone.

The ability to have multi levels of staff to a team gathering. Comfortable seating to the front of the space with a shallow 35cm desk behind the seating screen for standing (or on stools) for further delegates.

The epoxy coating protects the legs and frame structure, and gives a clear and glassy look. With a range of fabric colours and structure finishing to choose from, the Collaboration Seating can suit any company style.

[multiple configurations available](#)



**B7** **AV Hub**  
RRP: £2,295.00 +vat



Combined with a fitted meeting table and equipped with integrated data and cable management, in-desk power modules, providing electricity access. A cabinet hidden under the table provides additional storage space to keep the hub neat and tidy. The sleek metal legs is a stand out feature of the Hub yet complementing the modern design of the office space.

The AV Hub is the perfect substitute to a collaborative area without losing contact with the surroundings completely. Great for informal meeting and presentation. It can easily host up to a group of 5 people at a time.

The acoustic panels are available in a range of colour mixes to enhance or contrast with the office environment.

A selection of worktop colours to fit any style.

[multiple configurations available](#)



**B6** **Collaboration Media Screen**  
RRP: £2,295.00 +vat

With beautifully crafted acoustic screens and equipped with cabinets for storage. The Collaboration Media Screen provides a flexible solution to effective space planning, creating a break out area without renovating the office interior.

Two different width and height options available; a range of cabinet choices - from open shelf cabinet to double shelves sliding door cabinet; as well as a selection of fabric finishing, the Collaboration Media Screen can blend in or add a dash of finesse to any office environment,

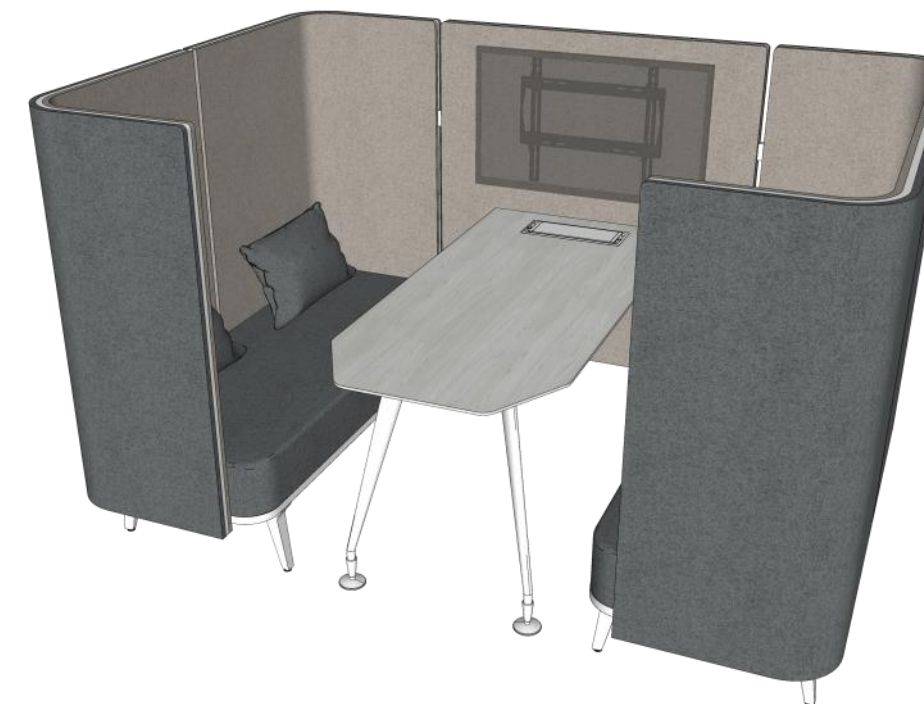
The ability to add AV is the perfect substitute or an addition to any collaborative area without compromising the surroundings and with a small 'foot-print' is ideal for meeting spaces or conference rooms.

The raised leg design allows for low maintenance housekeeping and uncomplicated cable management.

[multiple configurations available](#)



**B8** **Meeting Booth - MB02**  
RRP: £3,595.00 +vat



Our alternative Meeting Booth is a very cost effective solution when budget is a challenge. This arrangement has the flexibility to be face to face or more open with a 45° configuration.

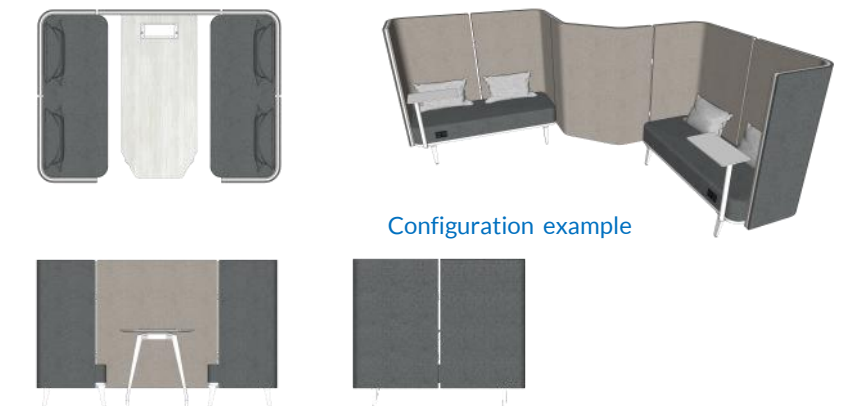
These attractive sofas, built on a ~20cm leg-frame provide a sophisticated look, while the wrap-around screens crafted from a 3 layer acoustic sandwich provide good acoustics to your conversations.

There is the option of a built in monitor bracket and HDMI/DPort & power cables to run within the screen/framework, it can therefore provide a great presentation opportunity also.

The table can be integrated or free-standing, with incorporated power built within the screen or into the table.

For sizes, you decide how large or small you want this and we will build it within ~10-20cm All in all, in a reception in your office space, the ante area to a conference suite or in a corridor, this will look amazing.

[multiple configurations available](#)



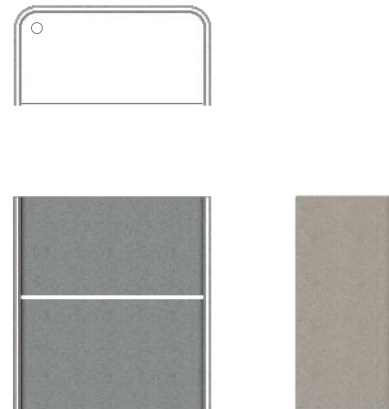
Configuration example

**B9** Study Booth  
RRP: £995.00 +vat



Our Study Booth comes in a range of widths and heights. This acoustically enhanced, free-standing booth has been developed to provide private study points within your learning or workspaces. It has a compact footprint with beautifully crafted 5cm thick screens around the desk surface, which are made up using a 3 layer acoustic sandwich. The desks can have surface power provision or power built into the fabric screen above or below the desk. A combination of colours for the fabrics and MFC for the desktop will ensure that this elegant design enhances any modern office, library, or learning space.

multiple sizes & configurations available



**B11** FTC Privacy Screen  
Price Upon Request



The Floor to Ceiling glazed privacy screen is simple, practical and elegant all in one. The powder-coated mild steel box section uprights are compressed between the soffit and the floor surface with adjustable 8-10cm dia footpads. Powder-coated clamps retain the toughened glass, which is located to suit the adjacent design. The glass is kept floating so to create an airy feeling to the sub-divide your space (NB: full-height glass is an option) Additional manifestation or 'etched' film can be applied to either side of the glass, should this installation be used as a handy whiteboard solution. Typically designed at 80cm c/c, a run of glazing can be made up to suit your space. Corner sections can be added to create a 'corral' configuration for bolt-holes or a quite cubby.

multiple sizes available

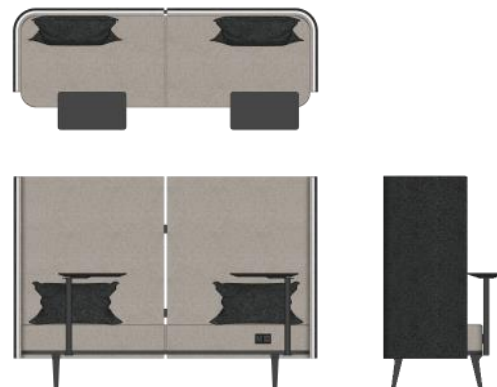


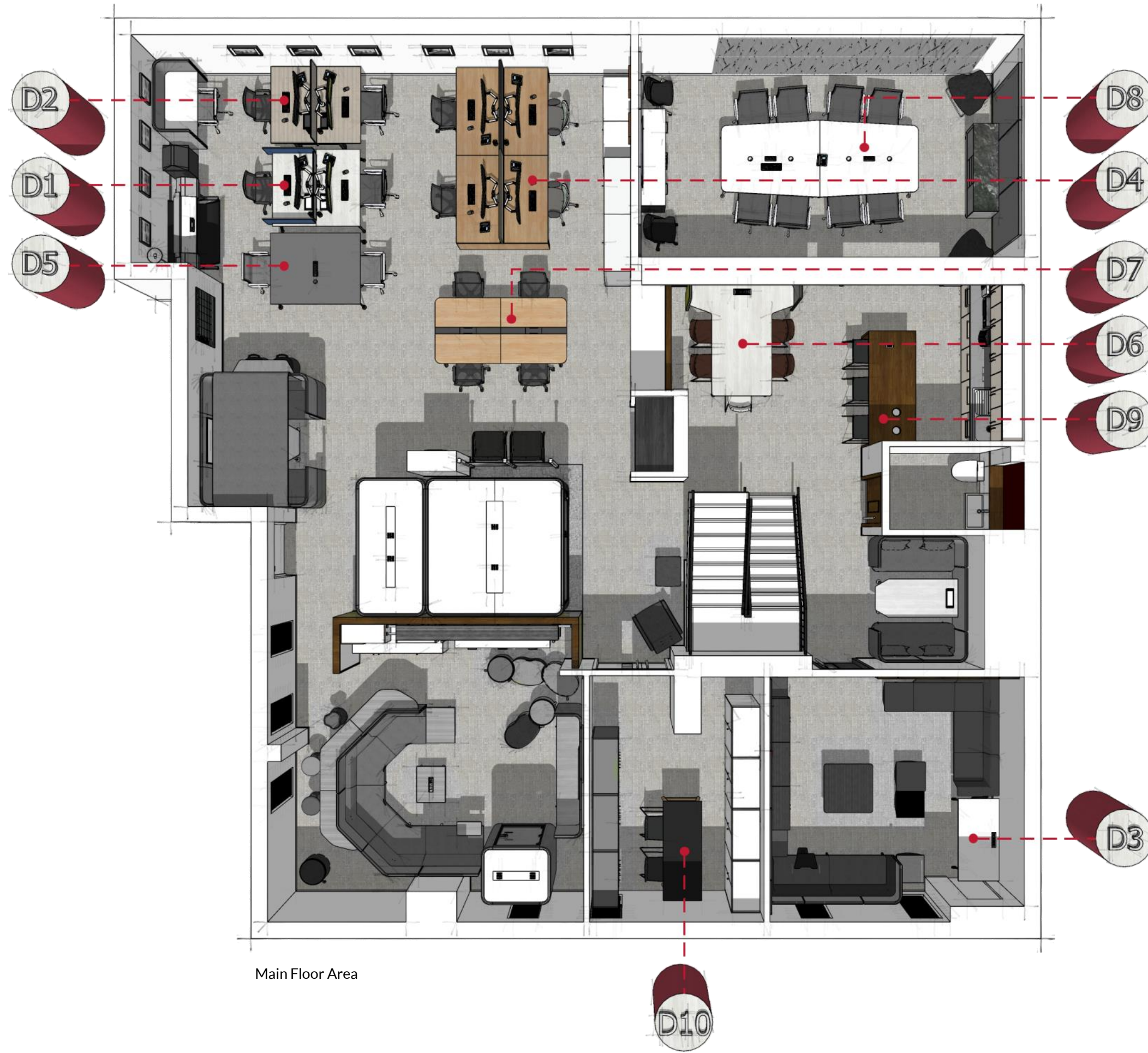
**B10** Sofa Booth  
RRP: £2,995.00 +vat



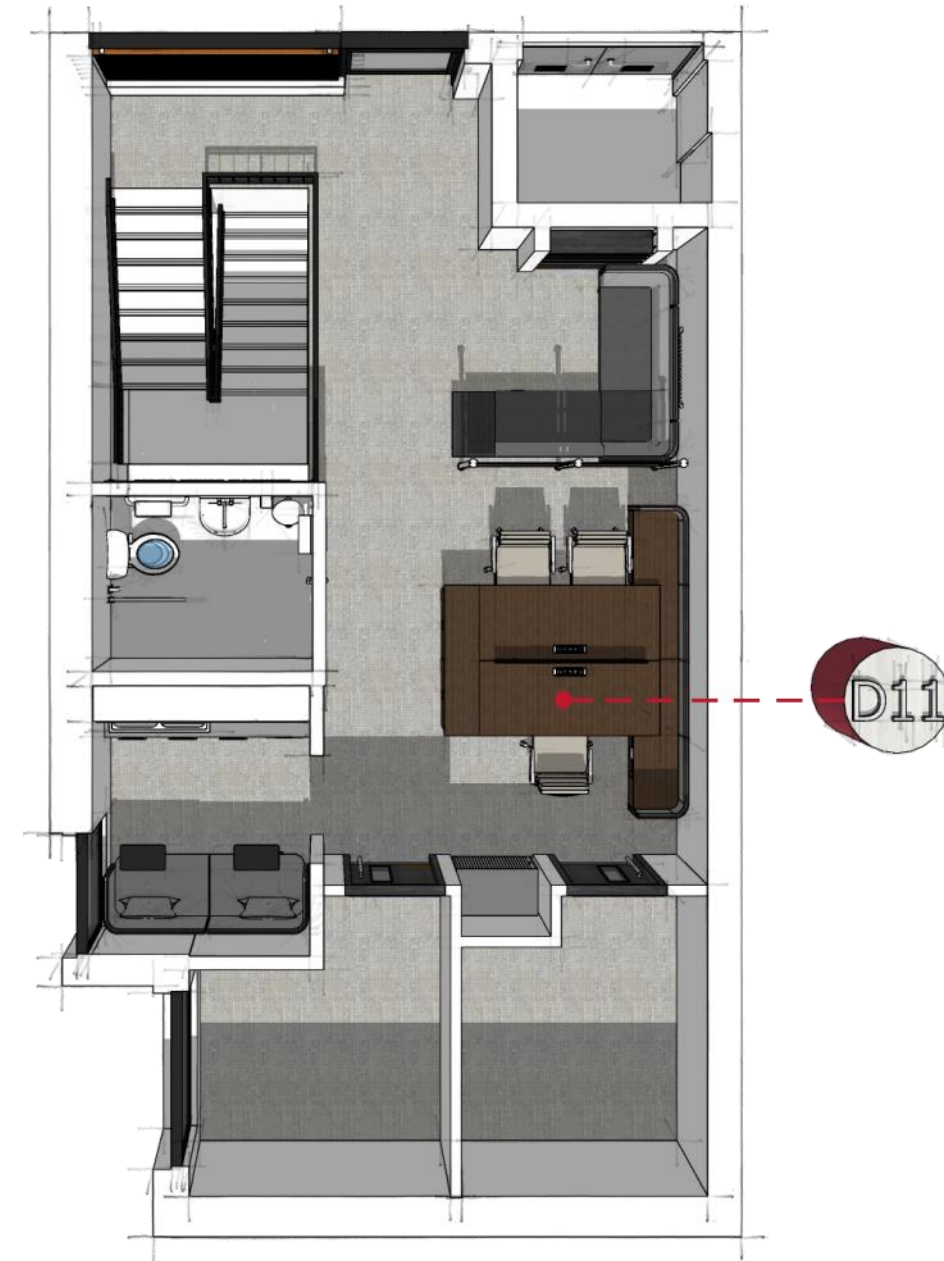
Our Sofa Booths provide an innovative solution for agile workplace which requires both concentration and collaboration. It creates a private space for people to complete a focused task in an open plan office environment. The panel consists of good absorptive material, offering great acoustic comfort by reducing noise and high pitch sounds. The panels are 5cm thick and are modular with several height options to tailor according to user requirements. The innovative geometric design provides endless possible configurations for various human activities, such as personal workplace, study corner, team collaboration area and breakout place. Our product can be designed to suit with any workplace and custom sizes are available for unusual areas of your office. Its high panel design allows the creation of passageway and divides work area. Flush surface power modules are dressed neatly below the seat are available in a variety of UK, USB or international plug socket combinations mean you can be always close to a connection point for laptop, tablets or task light. A wire riser is attached to the under structure to route the cables from floor to work surface. Laptop table stands that rotate for easy of use - available in a variety of sizes and finishes.

multiple sizes & configurations available





Main Floor Area



Reception Floor Area

- D1 I-Beam Desk
- D2 Sit I Stand Desk 01
- D3 FOLD Table
- D4 Sit I Stand Desk 02
- D5 Mode System Meeting Table
- D6 AV Hub
- D7 Nova Wood
- D8 DNA Meeting Table
- D9 Print Bay
- D10 High Table & Stools
- D11 Workstations

D1

## I-Beam Desk

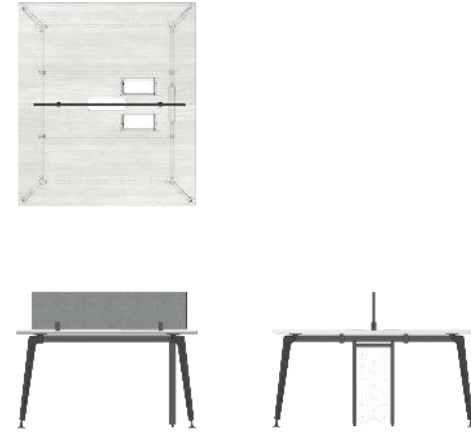
RRP: £795.00 +vat

(2nr back to back desks incl screen and cable management)

The framework of the I-Beam system is presented in aluminium die-cast leg and metal table beam. It uses nuts & bolts with connector brackets in the framework for your convenience in configuring the workstation in any shape such as linear, L-shaped, 120 degree and even in cluster design in the workplace. I-BEAM provides endless possibilities and design freedom with our approach creates flexible solutions that change with a customer's organizational needs over time. With I-BEAM, change is no longer costly. I-BEAM enables change to be implemented in an easy, cost effective and sustainable manner through optimal use of space, ease of installation and reconfiguration.

I-BEAM brings together the office furniture elements and generates an infinite number of configurations to satisfy the entire range or changing of organizational requirement in a workplace. The options for this product extend beyond the workstation and for meeting tables that comes in a multitude of sizes and shapes. This presents an elegant and space solution for any meeting or conference rooms. Power and data ports are easily integrated into worksurface for the modern office.

multiple sizes available



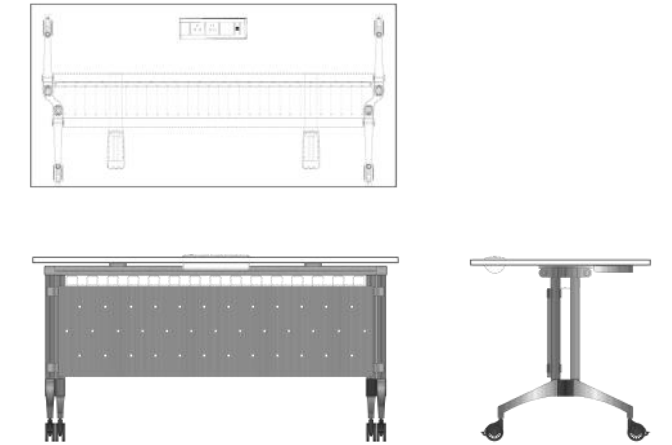
D3

## FOLD Table

RRP: £595.00 +vat

The FOLD table is structured with an aluminium extrusion on a rigid aluminium die-cast base, allowing the system to be configured to please workplace aesthetic and suit all corporate functions. Complete with an intelligent design wire management system, cables are hidden underneath the table surface. The FOLD product provides an exceptional platform for different applications – from general working area to conference suites, functions areas and training rooms. The folding function, allowing the table to be folded to ease the storage in an orderly manner. This attractive leg frame and aluminium die-cast base is powder coated in epoxy resin (White, Silver (matt or metallic) Champagne, Graphite or Black. The worksurface has a wide range of MFC finishes with either flat ABS flat edge or an attractive reverse chamfered option. A modesty panel is available in a range of different sizes, depending on the table shape, size and the extent of concealment required and can be perforated metal, frosted glass or MFC.

multiple sizes available



D2

## Sit | Stand Desk 01

RRP: £1,995.00 +vat

(2nr back to back desks incl screen and cable management)

This user-friendly, electrical, Sit | Stand Desk is perfect for sit-to-stand working styles to support contrasting work projects. It creates a flowing workplace that boosts productivity within the team.

Fitted with wire a management system, making sure the workplace is well-kept. It's open-frame design allows a free open structure. With a range of Melamine finishes suiting many diverse office styles.

Available as single desks or bench desks, the Sit | Stand Desk is designed for a flexible arrangement of workstations as well as for individual work.

Double-sided acoustic desk screens allow you to create colourful combinations so as to help the employees maintain concentration.

multiple desk sizes & configurations



D4

## Sit | Stand Desk 02

RRP: £2,395.00 +vat

(2nr back to back desks incl screen and cable management)

This user-friendly, electrical, Sit | Stand Desk is perfect for sit-to-stand working styles to support contrasting work projects. It creates a flowing workplace that boosts productivity within the team.

Fitted with wire a management system, making sure the workplace is well-kept. The sleek, panel legs design is ideal for those who prefer more privacy, with a range of Melamine finishes to suit many diverse office styles.

Available as single desks or bench desks, the Sit | Stand Desk is designed for a flexible arrangement of workstations as well as for individual work.

Double sided acoustic desk screens allow you to create colourful combinations so as to help the employees maintain concentration.

multiple desk sizes & configurations available



**D5** **Mode System Meeting Tables**  
RRP: £995.00 +vat

Mode system meeting tables offer elegance and an adaptive solution in any workplace or meeting/conference room. The tables come with fully aluminium die-cast legs, connectors and cross beam members. These allow the Mode System to be easily configured and provide rigidly in any custom size desired. Typically the surface is produced from a wide selection of MFC options, with a straight edge ABS lipping or an elegant reverse chamfer detail.

All tables can be supplied with flush surface power modules in a variety of UK, USB or international plug socket combinations.

Complete with under-structure cable management trays, umbilical cable splines and access through the table top via 6cm or 8cm grommets or a smart 'pop-up' access panel.

multiple sizes & shapes available



**D7** **Nova wood (Meeting Table)**  
RRP: £745.00 +vat

Nova wood table 240cm x 120cm will allow you to create the desired office style whether you want it to convey a feeling of warmth and cosiness, resemble a modern loft interior or create an atmosphere of subtle luxury.

The elegant leg design is the key feature of this table system. Every table is unique due to solid ash wood legs: Wood texture and wide growth rings create a distinctive pattern; Stained and lacquered wood reveals the pattern even more; Natural wood tends to change its colour over time.

Easy to assemble and disassemble - "metal to metal" construction. Tabletop: 25 mm MFC (melamine) with 2 mm ABS edging. 26 mm MDF covered in HPL with sloping painted edges. Sloping painted edges: white or black colour. The corners of the sloping desktop are rounded: R100 mm.

Electrical and cable management also can be installed if required, With power sockets, grommets for wire management, Cable tray.

multiple sizes available



**D6** **AV Hub**  
RRP: £2,295.00 +vat

Combined with a fitted meeting table and equipped with integrated data and cable management, in-desk power modules, providing electricity access. A cabinet hidden under the table provides additional storage space to keep the hub neat and tidy. The sleek metal legs is a stand out feature of the Hub yet complementing the modern design of the office space.

The AV Hub is the perfect substitute to a collaborative area without losing contact with the surroundings completely. Great for informal meeting and presentation. It can easily host up to a group of 5 people at a time.

The acoustic panels are available in a range of colour mixes to enhance or contrast with the office environment.

A selection of worktop colours to fit any style.

multiple configurations available

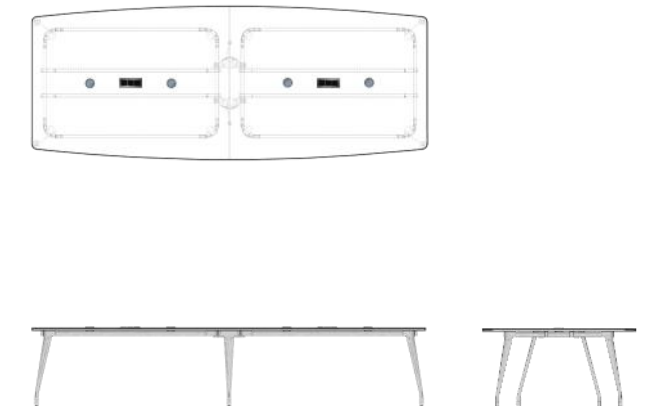


**D8** **DNA Meeting Table**  
RRP: £1,222.00 +vat

DNA features an elegant cast aluminium leg frame which supports a combination of worktop shapes, affording a clarity of thought and design in an otherwise complex environment. It's tough and long-lasting too, but when it finally reaches the end of its life, more than 97% of its materials can be recycled for an exceptional gentle environmental footprint.

The boat-shaped conference table with 25 MFC worktop also can come in other finishes. Power, grommet cable management can also be installed making sure all feature equipment is safely stored away.

multiple sizes available





**D9** **Print Bay**  
RRP: £2,995.00 +vat



Our print Bays were originally developed as a project specific product. However, more and more Clients has requested this product to be part of their scheme. This piece of practical furniture can be used as a stand-up bench or for bench seating with pull-up stools to the reverse side which has a ~35cm overhang. The 'floating' worktop, which can be produced in 4cm 'butchers block' to match the side panels make this a real statement piece.

Completely customisable to make this as much of a utility as possible, it can be produced with scrap chutes for waste or recycling. A flush surface power module, which is available in a variety of UK, USB or international plug socket combinations allows the surface to be used as a temporary work setting.

To one side there is plentiful storage with access to the waste or recycling bins and the other, the overhang for staff to sit comfortably to work, study or enjoy a coffee or their lunch while collaborating with their colleagues etc. Multiple finishes are available to suit your scheme. The standard size of this product, as shown in the images: 211-cm x 95-cm x 100-cm.



multiple sizes & configurations available

**D10** **High Table & Stools**  
RRP: £595.00 & £295.00 +vat

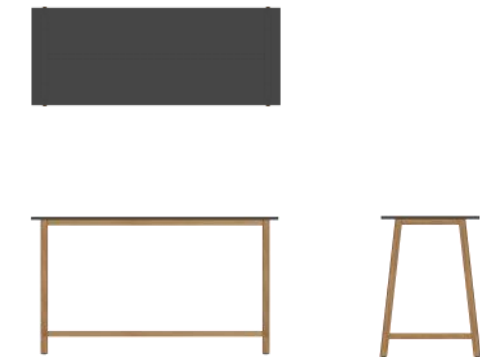


This high table and stools set adds an extravagant touch to your office with this sumptuous Scandinavian design.

The High Table & Stools is perfectly built to be a chill out area in the workplace, bringing out the modern and stylish vibe of a present-day office. Hand-crafted out of solid ash wood, there is distinctive pattern to each and every single table leg, giving the seats a more homey feel to them; whilst the metal legs of the stools offsets a more modern look to the office space.

Available in multiple lengths, but special sizes available 160cm x 70cm shown set at 105cm tall, this flexible piece of furniture is more than just a tall workbench, but adds great benefit to any agile workspace.

multiple sizes available



**D11** **Workstations**  
RRP: £2,495 +vat



A modular system incorporates a work desk, storage facilities and waiting lounge to help conquer the challenges that are faced, day by day.

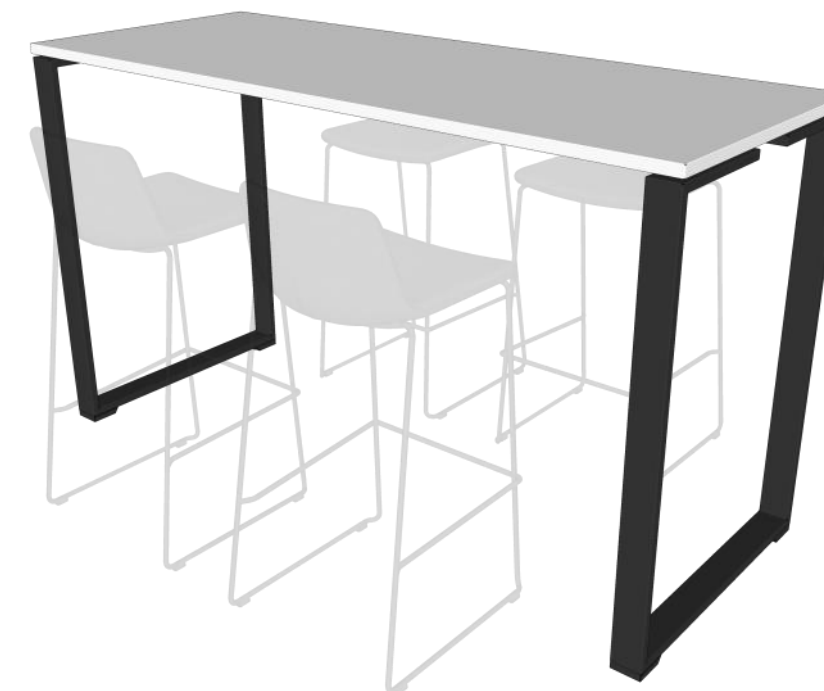
Equipped with adept cable management, the bench system provides a platform to entertain different combinations of modules, which can be interchanged according to the style and needs of the user. The raised legs design creates a floating effect, giving a lightness impression and provides exceptional housekeeping management.

The Workstations aim to facilitate greater work efficiency and productivity. Acoustic desk screens are available for privacy, and help employee stay focus..

multiple desk sizes & configurations available



**D12** **High Bench**  
RRP: £595.00 +vat

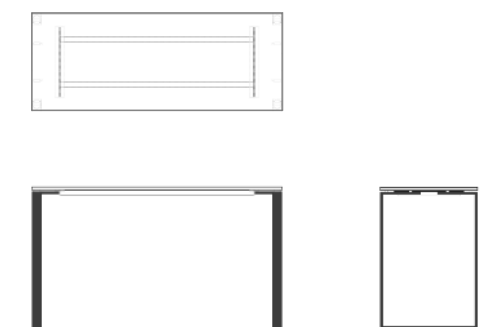


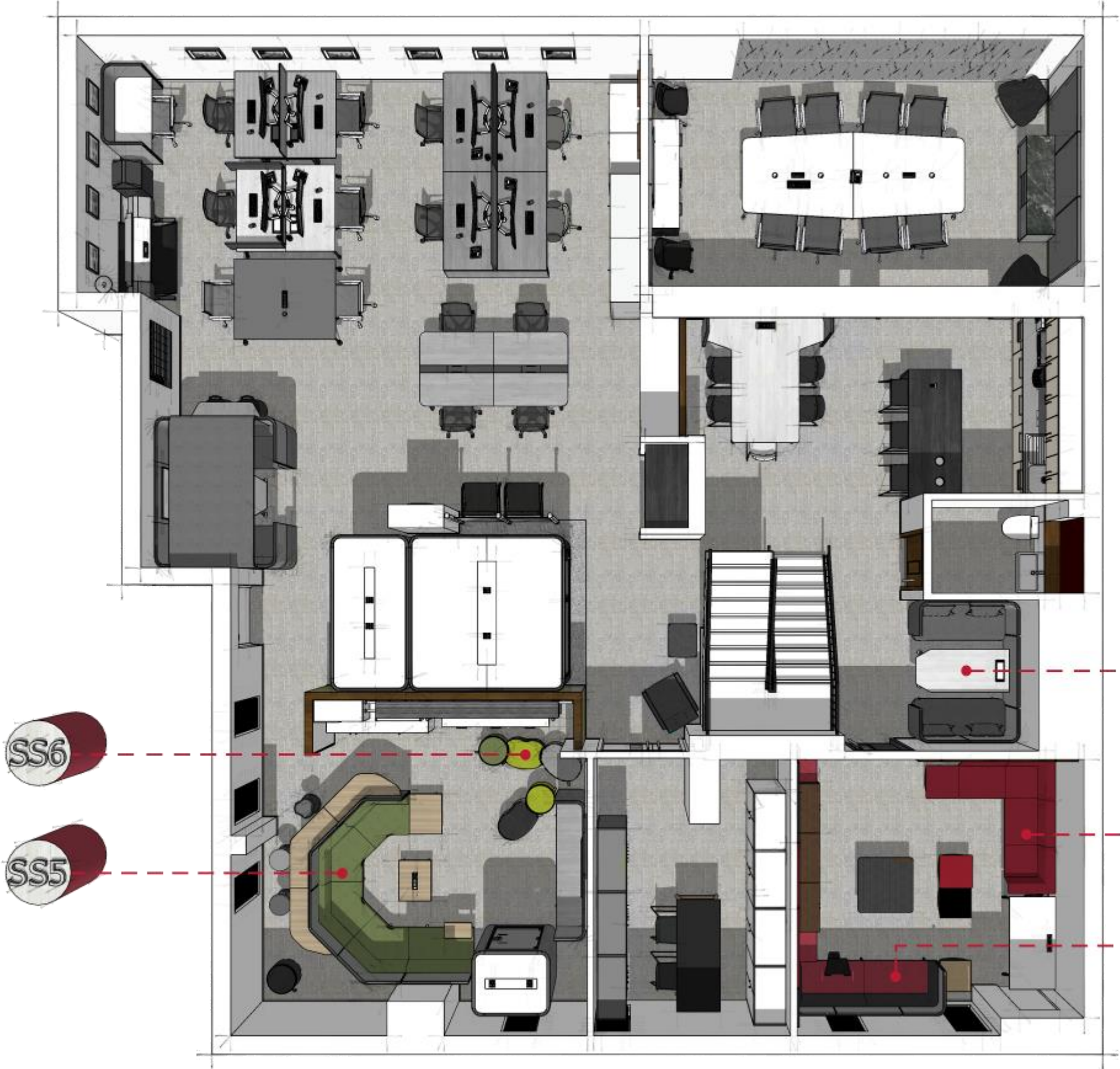
This High Bench and stools set adds an extravagant touch to your office with this sumptuous Scandinavian design.

High Bench with O-shaped legs is a part of the JAZZ modern office furniture system. The table is an excellent choice for relaxation or short meeting areas. Tabletop: 25mm MFC (melamine) with 2 mm ABS edging.

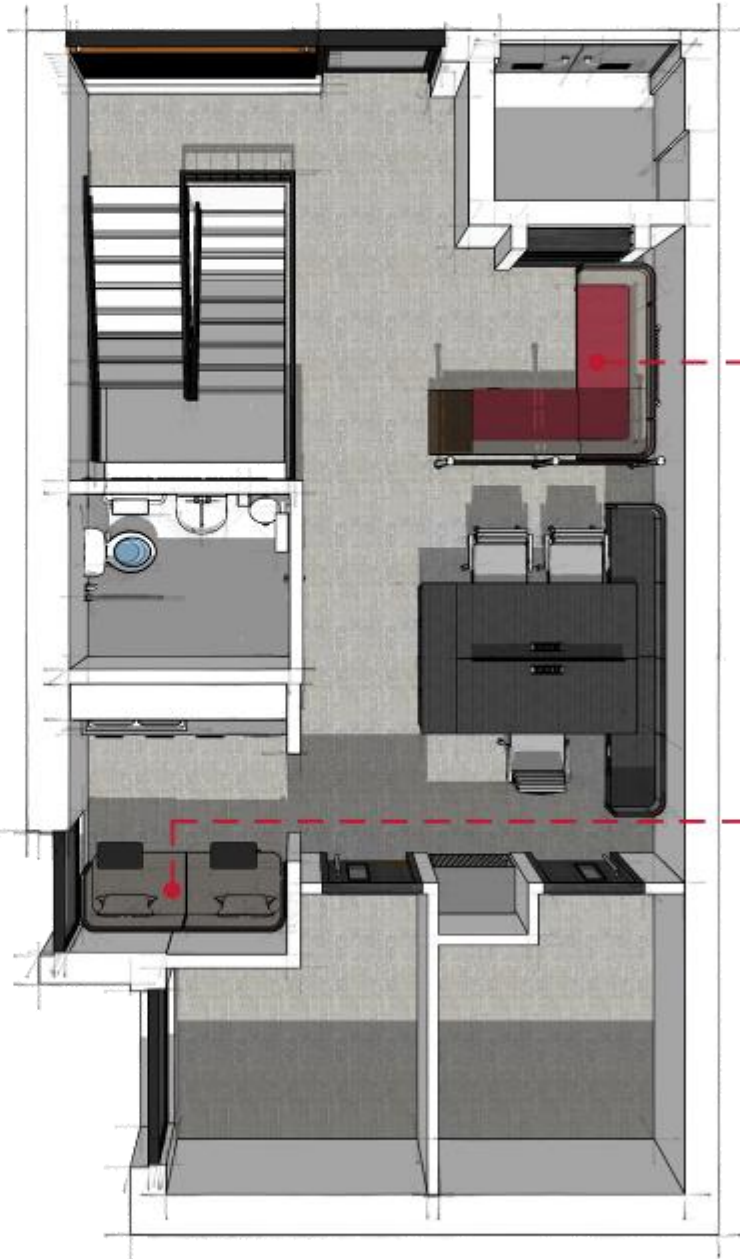
8 mm gap between the frame and tabletop giving it a floating look. our standard dimensions W-1,80cm x D-70cm | H: 90cm & 103cm).

multiple sizes available





Main Floor Area



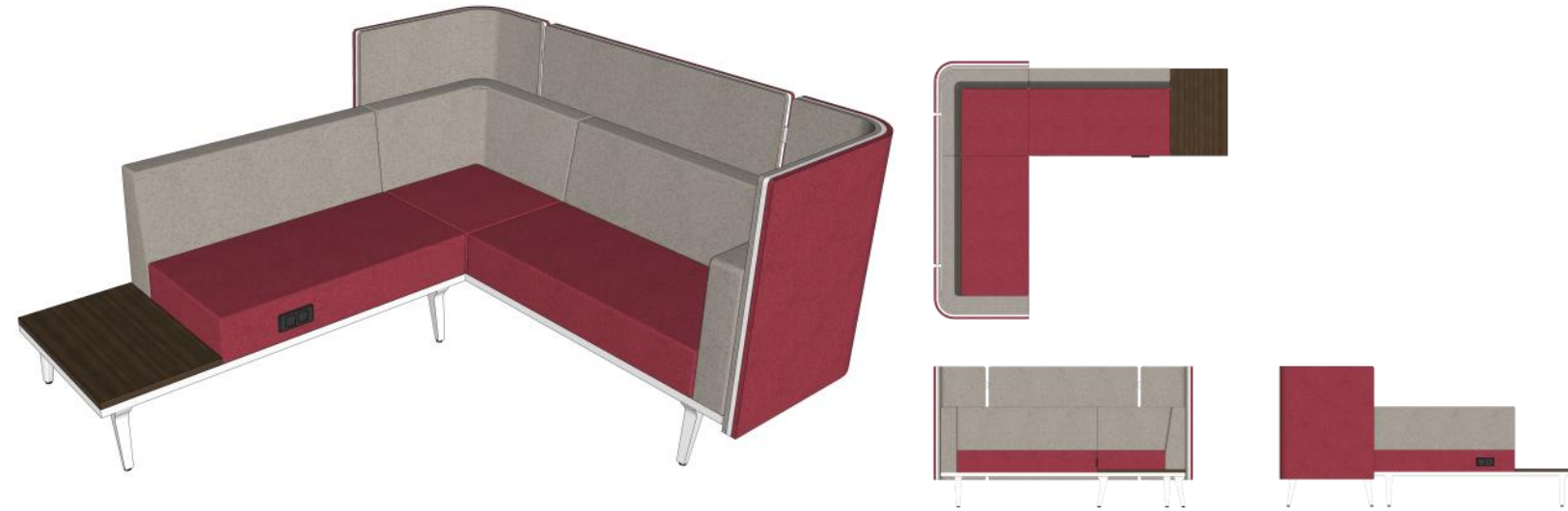
Reception Floor Area

- SS1 Reception Seating
- SS2 Sofa Booth
- SS3 SECTION Modular Seating
- SS4 Lounge Seating
- SS5 Collaboration Seating
- SS6 Podium Seating
- SS7 Meeting Booth MB02

**SS1 Reception Seating**  
RRP: £3,495 +vat

The modular design is great for maximising the functionality of an open space. This seating comes in a different range of colours to suit any style of office space. The elevated acoustic panels create a relaxing and reassuring atmosphere that is key for creating a stress-free zone, especially when it comes to an area as important as the reception lounge. Equipped with easy to reach power socket point and cable management, this modular system provides a platform to accommodate different modules such as cabinets, tables, seats, or cubicle planters, providing a high degree of functionality. The raised legs design creates a lightness impression and a better housekeeping management.

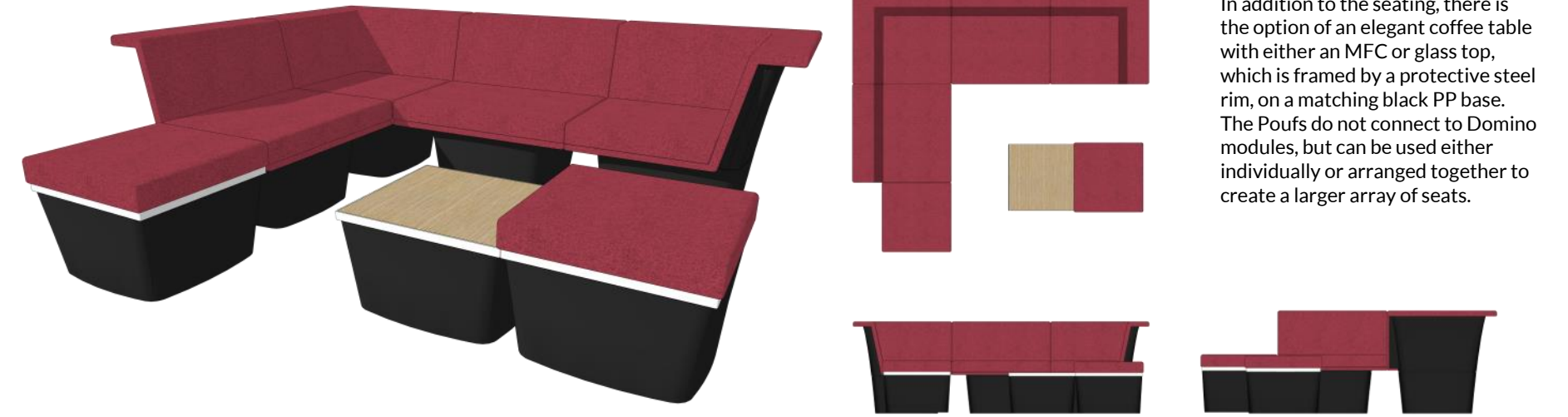
multiple configurations available



**SS3 SECTION Modular Seating**  
RRP: £1,450.00 +vat (for the configuration shown)

Our SECTION Modular Seating has been designed in a way that allows it to be easily configured for any area of the office. Each seat has a footprint of 75cm and by simply using these two different modules, one can configure an infinite variety of layouts, from basic row seating to unique creative designs. This sharp looking system is perfect for semi-casual waiting, breakout, collaboration or entertainment applications. The corner module has two right-angled backrests, that double as an armrest on one side. The structure is made from a two-piece shell of injection-moulded black polypropylene and the base is supported by low feet, made from injection-moulded black polypropylene, which are adjustable for height to compensate for uneven floors.

multiple sizes available

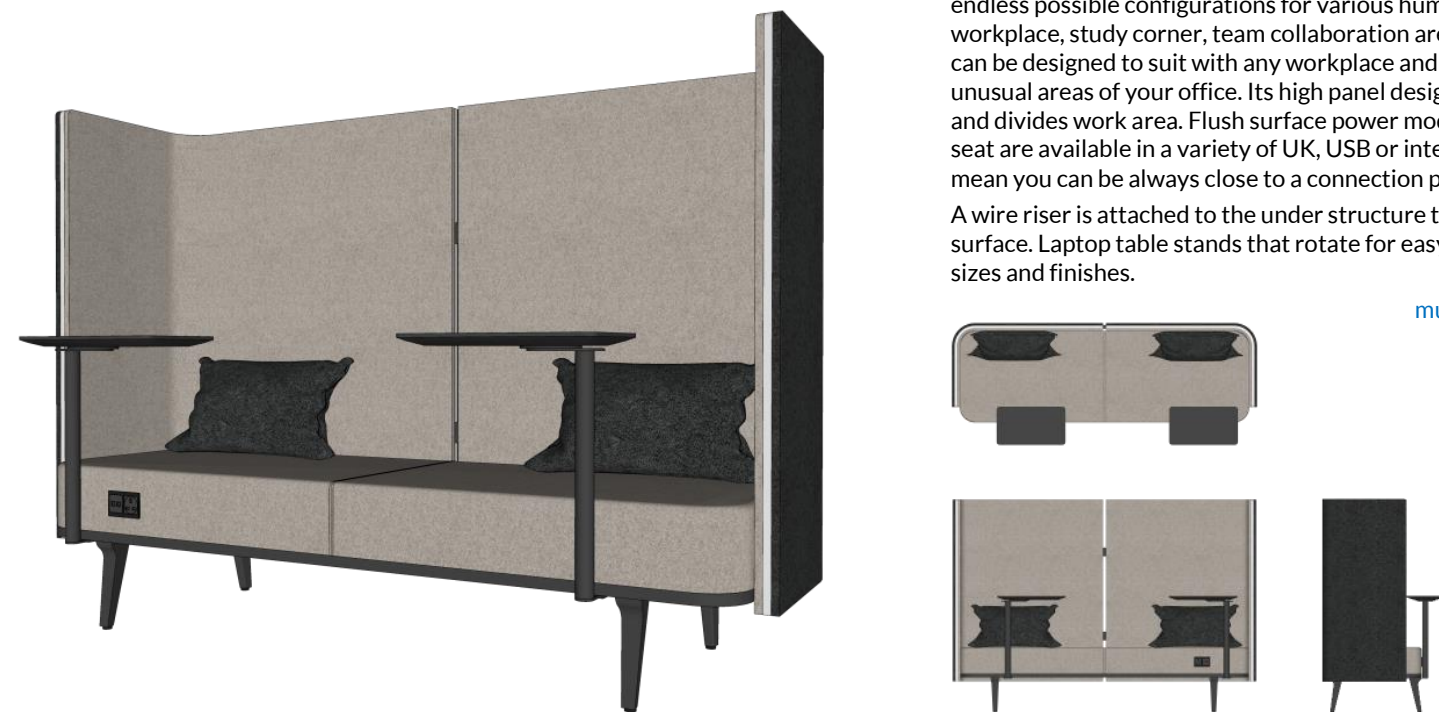


In addition to the seating, there is the option of an elegant coffee table with either an MFC or glass top, which is framed by a protective steel rim, on a matching black PP base. The Poufs do not connect to Domino modules, but can be used either individually or arranged together to create a larger array of seats.

**SS2 Sofa Booth**  
RRP: £2,995.00 +vat

Our Sofa Booths provide an innovative solution for agile workplace which requires both concentration and collaboration. It creates a private space for people to complete a focused task in an open plan office environment. The panel consists of good absorptive material, offering great acoustic comfort by reducing noise and high pitch sounds. The panels are 5cm thick and are modular with several height options to tailor according to user requirements. The innovative geometric design provides endless possible configurations for various human activities, such as personal workplace, study corner, team collaboration area and breakout place. Our product can be designed to suit with any workplace and custom sizes are available for unusual areas of your office. Its high panel design allows the creation of passageway and divides work area. Flush surface power modules are dressed neatly below the seat are available in a variety of UK, USB or international plug socket combinations mean you can be always close to a connection point for laptop, tablets or task light. A wire riser is attached to the under structure to route the cables from floor to work surface. Laptop table stands that rotate for easy of use – available in a variety of sizes and finishes.

multiple sizes & configurations available



**SS4 Lounge Seating**  
RRP: £4,495 +vat

The modular design is great for maximising the functionality of open space, with cabinets for storage and comfortable yet aesthetically pleasing seating, which comes in a range of different colours\*. The elevated acoustic panels create a soothing and tranquil atmosphere that is ideal for the waiting lounge seating, also acting as a stress-free zone for the occupants. The raised leg design allows for low maintenance housekeeping and uncomplicated cable management. With optional an easy to reach power point, and laptop table, it turns this Waiting Lounge also into fully functional agile working space.

multiple configurations available



**SS5 Collaboration Seating**  
RRP: £5,995.00 +vat

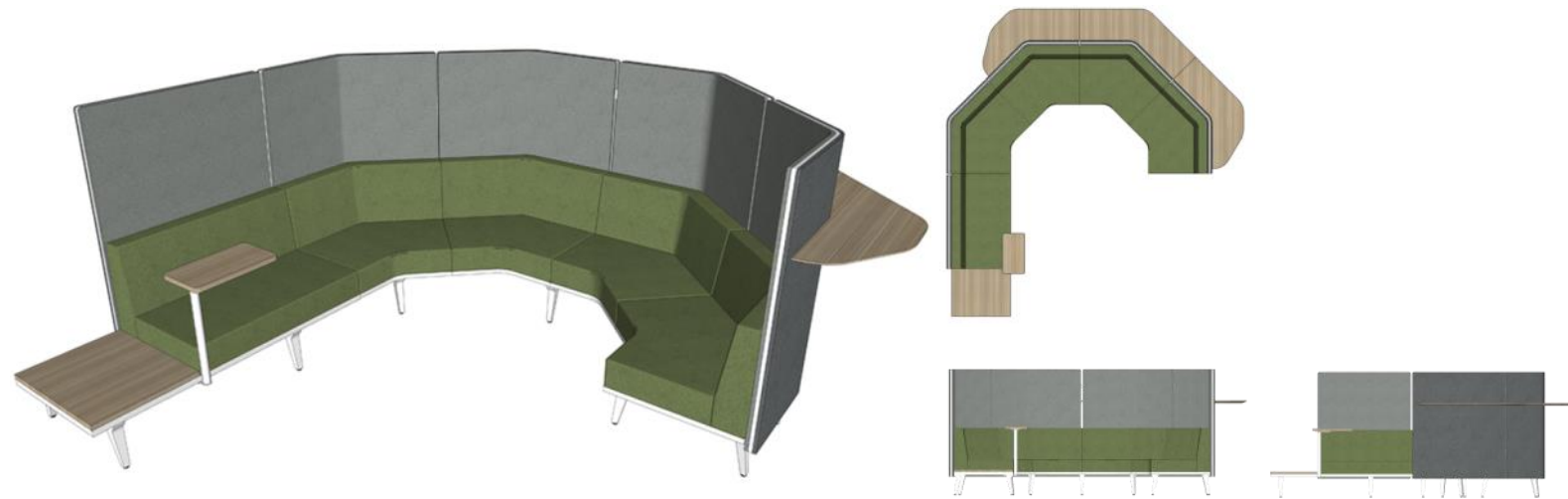
Break away from the stereotypical impression of a waiting lounge, the Collaboration Seating provides a flexible arrangement and along with its modern, sharp design, it flatters distinct office styles and needs.

Equipped with an elevated acoustic panel, it can be an ideal relaxing hub, as well as a stress-free zone.

The ability to have multi levels of staff to a team gathering. Comfortable seating to the front of the space with a shallow 35cm) desk behind the seating screen for standing (or on stools) for further delegates.

The epoxy coating protects the legs and frame structure, and gives a clear and glassy look. With a range of fabric colours and structure finishing to choose from, the Collaboration Seating can suit any company style.

[multiple configurations available](#)



**SS7 Meeting Booth - MB02**  
RRP: £3,595.00 +vat

Our alternative Meeting Booth is a very cost effective solution when budget is a challenge. This arrangement has the flexibility to be face to face or more open with a 45° configuration.

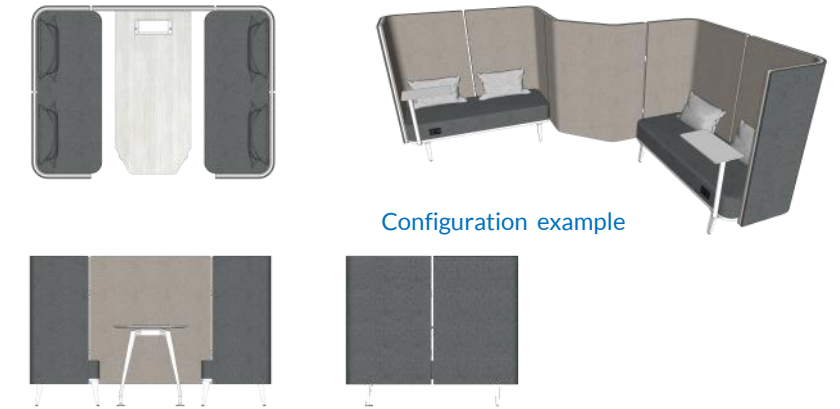
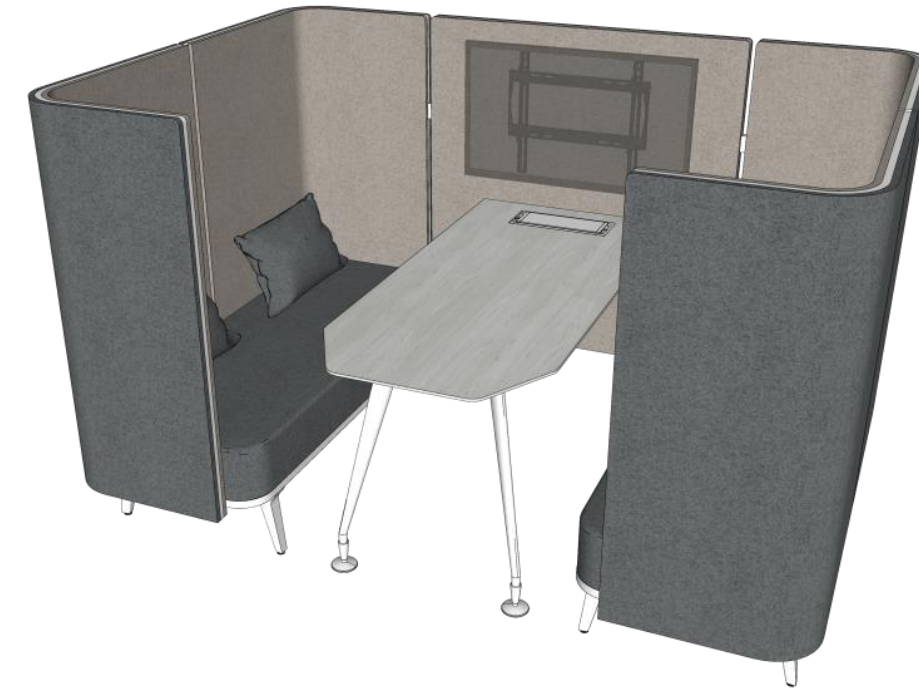
These attractive sofas, built on a ~20cm leg-frame provide a sophisticated look, while the wrap-around screens crafted from a 3 layer acoustic sandwich provide good acoustics to your conversations.

There is the option of a built in monitor bracket and HDMI/DPort & power cables to run within the screen/framework, it can therefore provide a great presentation opportunity also.

The table can be integrated or free-standing, with incorporated power built within the screen or into the table.

For sizes, you decide how large or small you want this and we will build it within ~10-20cm All in all, in a reception in your office space, the ante area to a conference suite or in a corridor, this will look amazing.

[multiple configurations available](#)



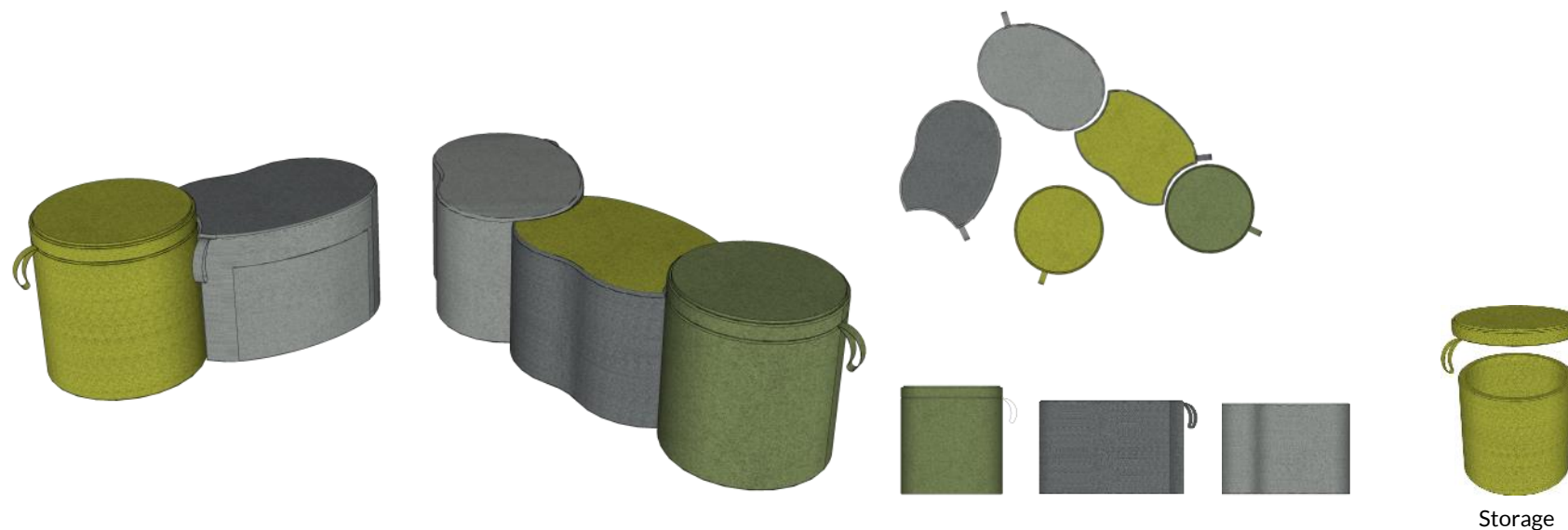
Configuration example

**SS6 Podium Seating**  
RRP: £259 & £295 +vat

A great addition to the office space and comfortable, agile seating in a workplace. Acting doubly as storage unit to store cushions or magazines, keeping the lounge area nice and tidy, whilst restoring a high-class look to an any breakout area.

With its unique and tessellating design aided with a fantastic selection of fabric finishing choices, there is a number of combinations dependant on a particular companies' style and their needs.

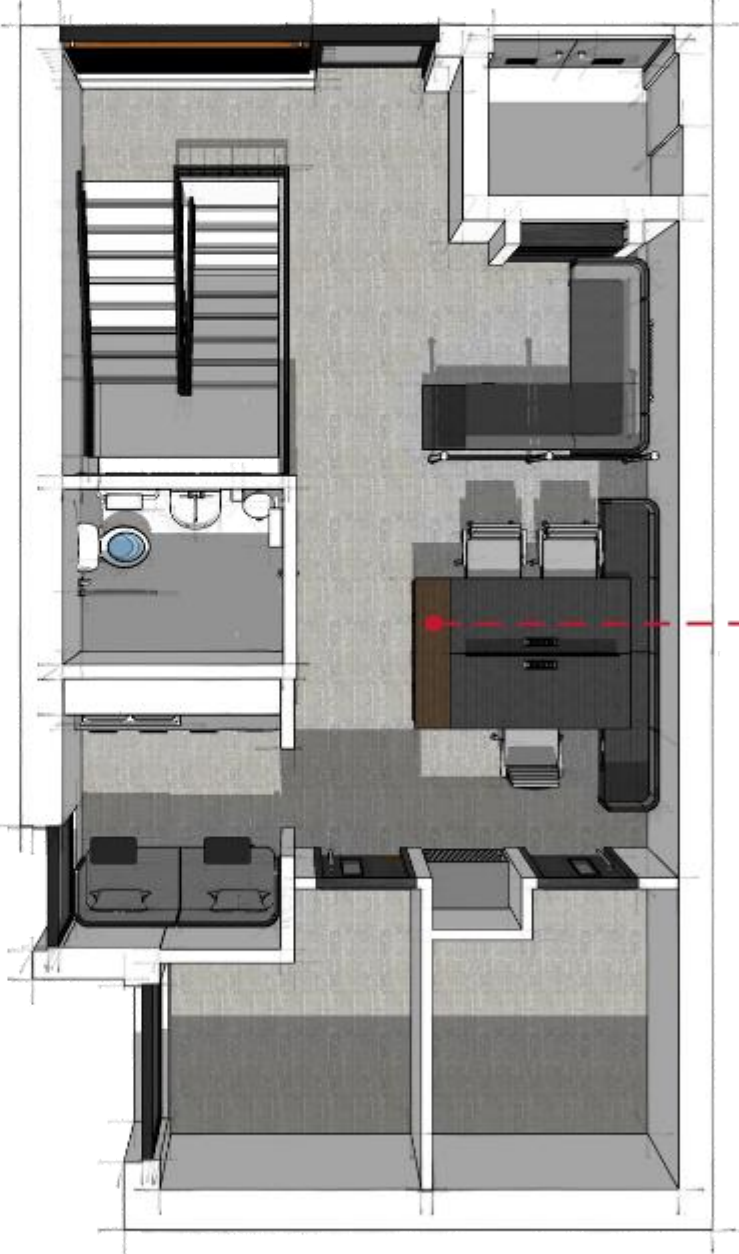
This Breakout Seating offers creative and an enjoyable solution to a storage and informal lounge area.



Storage



Main Floor Area



Reception Floor Area

- S1 Credenza
- S2 Meeting Room Credenza Unit
- S3 Store wall & coat cupboard
- S4 Lockers

**S1** **Credenza**  
RRP: £595.00 +vat

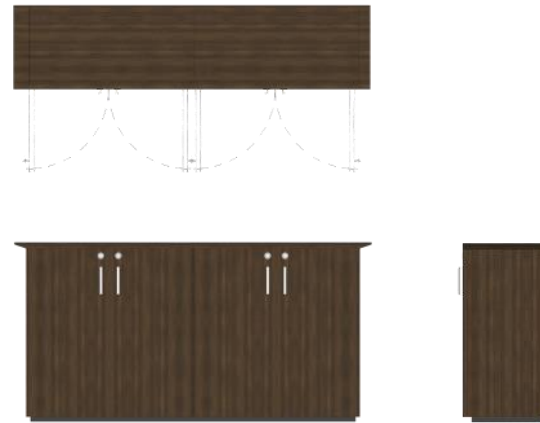


This very practical and modular piece of system furniture can be stand alone or built into end of a cluster of desks. This credenza could be used anywhere in your office or meeting room facility.

Our example: 150cm x 35cm x 75cm has been built using walnut MFC with 4nr hinged doors and an elegant worktop over with a reversed chamfered edge. The floating look is thanks to a 50mm high shadow gap feature skirting.

With different combinations of modules, which can be interchanged according to the style and needs of the user. A selection of colours down to the style of doors: sliding or hinged. This design can be built to your bespoke dimensions with no additional cost.

multiple sizes & configurations available



**S2** **Meeting Room Credenza Unit**  
RRP: £795.00 +vat



This Meeting Room Credenza Unit is a fantastic sideboard for so many different uses. The composite ceramic marble surface provides an elegant twist that blends the other finishes brilliantly.

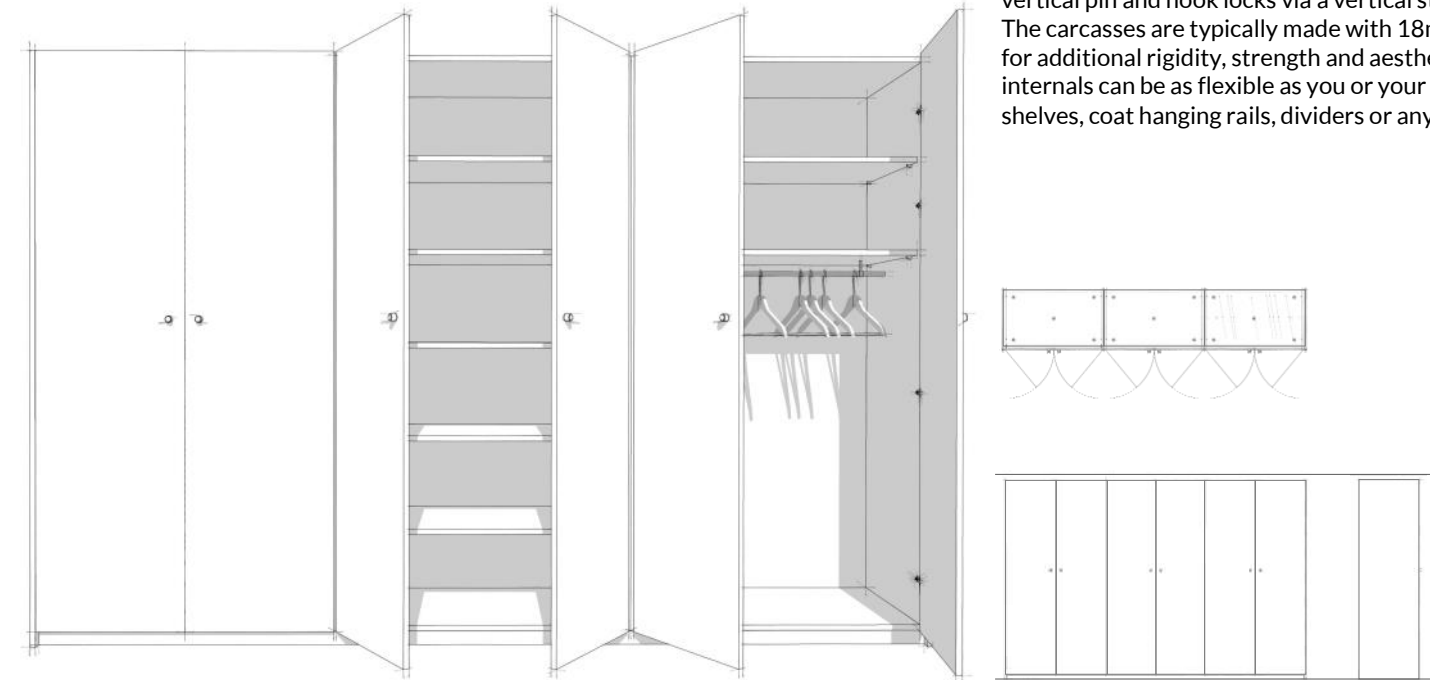
Complete with 3 easy flow pull-out drawers and left and right soft close doors either side, this piece of furniture provides great capacity for its footprint of L-160cm x W-46cm x H-83cm.

Ideal for a meeting room for stationary, AV equipment, or even for Client lunches, this credenza will be a great addition and the sparkle that you could be looking for.

multiple sizes available



**S3** **Store wall & coat cupboard**  
RRP: £795.00 +vat (cost per unit)



Our Joinery partners whom we have been working with for the past 5 years have now managed to reduce the lead time on our joinery to 4-5 weeks. Our Store wall & Coat Cupboard are typically 50cm deep, but can be made to any depth, up to 80cm deep. These floor to ceiling units are made in 2-parts, but will full-height doors max 278cm. The units themselves can be an additional 10cm taller if needed when incorporating the top and bottom plinths. Each door is made with 8nr 'soft close' hinges and locking handles to operate the vertical pin and hook locks via a vertical steel pin and hook espagnolette lock. The carcasses are typically made with 18mm white MFC, including the backs for additional rigidity, strength and aesthetics. Laminates are available. The internals can be as flexible as you or your Client wishes, with adjustable shelves, coat hanging rails, dividers or any custom elements that you desire.

multiple sizes available

**S4** **Lockers**  
RRP: £660.00 +vat (cost per unit)



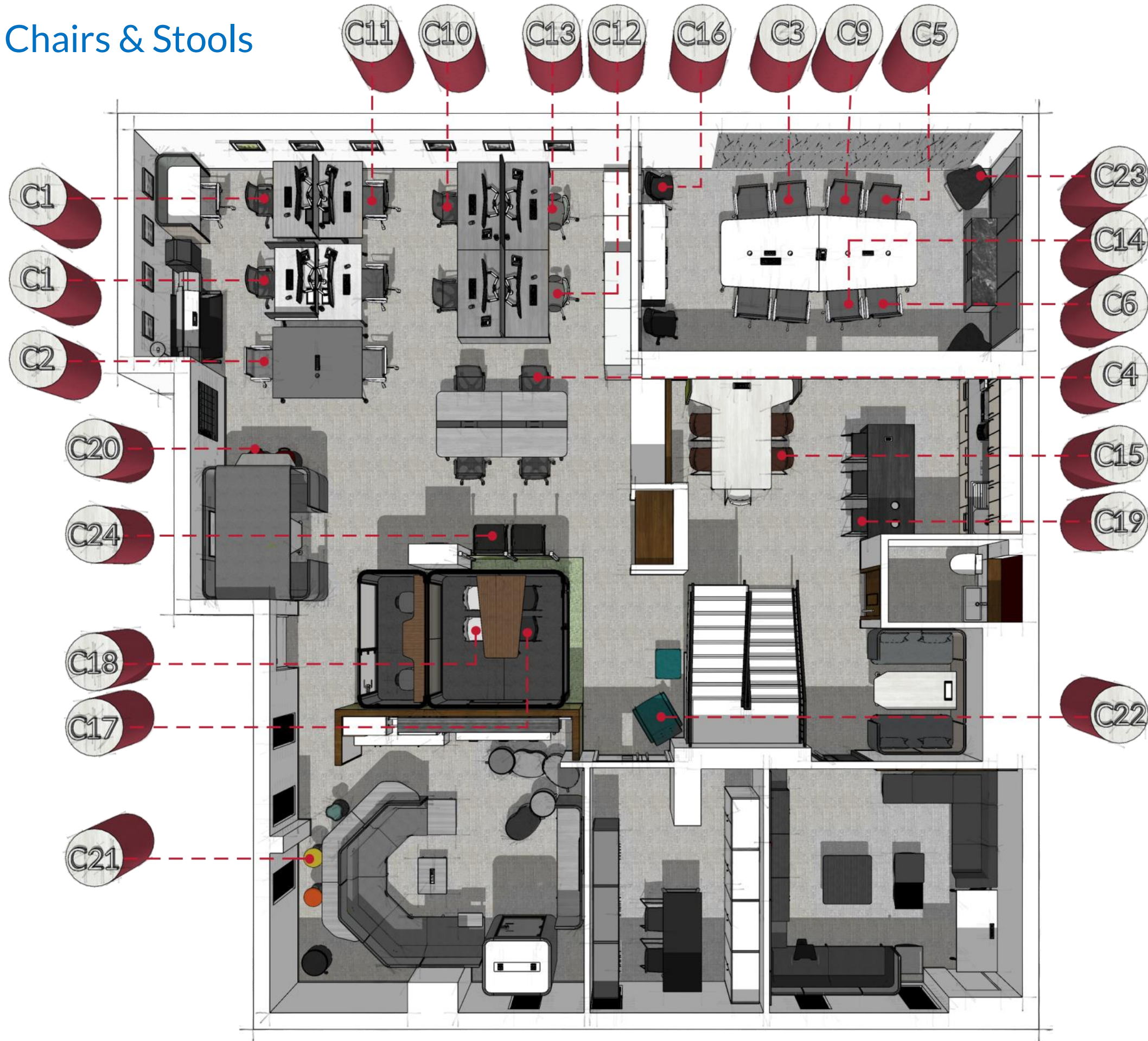
Available from 1 to 10+ doors, and with options to suit various applications and budgets, it's easy to see why Goodwood lockers are an increasingly popular choice for personal storage. Our lockers have a unique concealed hinge which eliminates the need for hinge adjustment to align doors - and doors never drop out of line. Bottom compartments can also be manufactured as drawers to assist with low-level access. As well as our standard dimensions W-80cm & 100cm | D-47cm, we also cater for custom designs to fit your style & space.

multiple sizes available

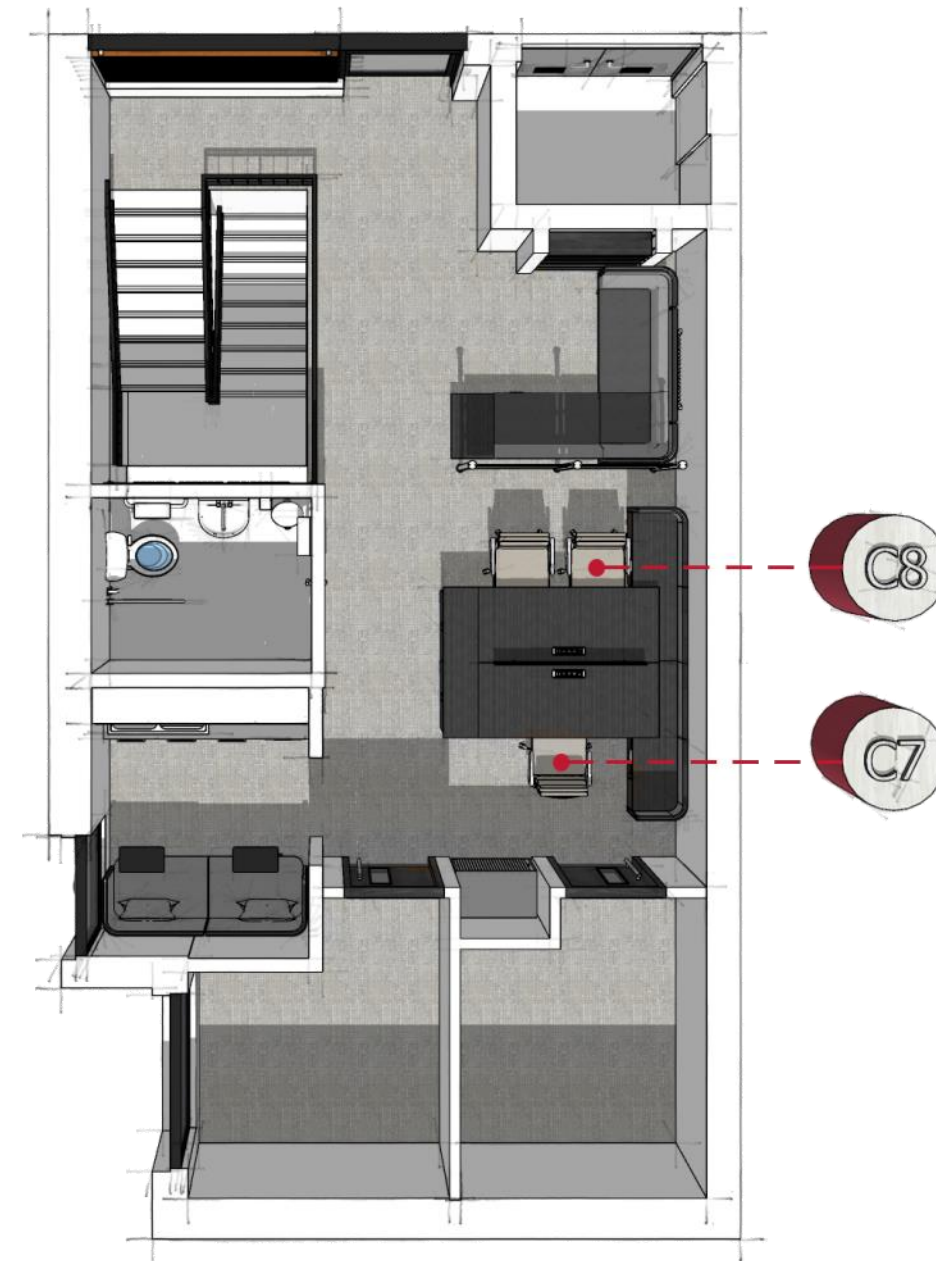


# Chairs & Stools

Ref: AM14



Main Floor Area



Reception Floor Area

- C1 Supremo Mesh (High Back)
- C2 Supremo Mesh (Medium Back)
- C3 Supremo Mesh (Meeting chair)
- C4 Supremo Rib (High Back)
- C5 Supremo Rib (Medium Back)
- C6 Supremo Rib (Meeting chair)
- C7 Supremo Pad (High Back)
- C8 Supremo Pad (Medium Back)
- C9 Supremo Pad (Meeting chair)
- C10 Barcelona (High Back)
- C11 Barcelona (Medium Back)
- C12 Intouch
- C13 Polygram Mesh (High Back)
- C14 Polygram Mesh (Medium Back)
- C15 Tango (Wire & Wood Frame)
- C16 Mobby Fold
- C17 Lapis (Stacking Chairs)
- C18 Zeus (Stacking chairs)
- C19 Tango (High stool)
- C20 Swing (Stool)
- C21 Sitool (Tilt Stools)
- C22 Max (Lounge Seating)
- C23 Vegas (Lounge Seating)
- C24 Aavanti

**C1** **Supremo Mesh (High Back)**  
RRP: £460.00 +vat

This high-back executive chair is durable with its sleek elastic nylon mesh upholstery creates a real statement in any office or study. The one-piece seat and back provides a breathable, woven, and translucent mesh, which offers contouring comfort and good ventilation. Set on a 5-star polished aluminium base with ergonomic controls, this is certainly the chair for you.



**C2** **Supremo Mesh (Medium Back)**  
RRP: £435.00 +vat

This medium-back task chair is durable with its sleek elastic nylon mesh upholstery creates a real statement in any office or study. The one-piece seat and back provides a breathable, woven, and translucent mesh, which offers contouring comfort and good ventilation. Set on a 5-star polished aluminium base with ergonomic controls, this is certainly the chair for you.



**C3** **Supremo Mesh (Meeting Chair)**  
RRP: £410.00 +vat

This medium-back meeting chair is durable with its sleek elastic nylon mesh upholstery creates a real statement for your conference room. The one-piece seat and back provides a breathable, woven, and translucent mesh, which offers contouring comfort and good ventilation. Set on a 4-star polished aluminium base, it has abundance of elegance.



**C4** **Supremo Rib (High Back)**  
RRP: £575.00 +vat

This high-back executive chair is upholstered in either full leather, half Italian leather or PU leather with clean and trim lines makes it appropriate in all kind of places, from a classic to a contemporary office. A single continuous piece of upholstery tautly stretched between two aluminium side profiles creating a comfy alignment of the back. A redesign on a classic piece, superbly made and offers a timeless addition to any executive space. Set on a 5-star polished aluminium base with ergonomic controls, this is certainly a wonderful chair.



**C5** **Supremo Rib (Medium Back)**  
RRP: £545.00 +vat

This medium-back task chair is upholstered in either full leather, half Italian leather or PU leather with clean and trim lines makes it appropriate in all kind of places, from a classic to a contemporary office. A single continuous piece of upholstery tautly stretched between two aluminium side profiles creating a comfy alignment of the back. A redesign on a classic piece, superbly made and offers a timeless addition to any executive space. Set on a 5-star polished aluminium base with ergonomic controls, this is certainly a wonderful chair.



**C6** **Supremo Rib (Meeting Chair)**  
RRP: £495.00 +vat

This medium-back meeting chair is upholstered in either full leather, half Italian leather or PU leather with clean and trim lines makes it appropriate in all kind of places, from a classic to a contemporary office. A single continuous piece of upholstery tautly stretched between two aluminium side profiles creating a comfy alignment of the back. A redesign on a classic piece, superbly made and offers a timeless addition to any executive space. Set on a 4-star polished aluminium base, it has an abundance of elegance.





**C7** **Supremo Pad (High Back)**  
RRP: £595.00 +vat

The Supremo high-back 'soft pad' executive leather chair provides an optional choice of design with a luxurious feel of leather. The chair is fashioned into individual soft pads that will not flatten over time, thereby providing great comfort for its lifetime. Set on a 5-star polished aluminium base with ergonomic controls, this is certainly the chair for you.



**C8** **Supremo Pad (Medium Back)**  
RRP: £575.00 +vat

The Supremo medium-back 'soft pad' leather task chair provides an optional choice of design with a luxurious feel of leather. The chair is fashioned into individual soft pads that will not flatten over time, thereby providing great comfort for its lifetime. Set on a 5-star polished aluminium base with ergonomic controls, this is certainly the chair for you.



**C9** **Supremo Pad (Meeting Chair)**  
RRP: £545.00 +vat

The Supremo 'soft pad' leather meeting chair provides an optional choice of design with a luxurious feel of leather. The chair is fashioned into individual soft pads that will not flatten over time, thereby providing great comfort for its lifetime. Set on a 4-star polished aluminium base, it has an abundance of elegance.



**C10** **Barcelona (High Back)**  
RRP: £335.00 +vat

The Barcelona high-back executive conference chair has a clearly defined structure, which is well known for its strong design elements and high functionality. With its 'L'-shaped armrest attached to perfectly with 'Y'-back support and bottom structure for light and elegance presence, allowing one to be cradled with comfort. This chair has practicality in an avant-garde design. Set on a classic 5-star polished aluminium base with height control, this would be an amazing addition to any meeting facility.



**C11** **Barcelona (Medium Back)**  
RRP: £320.00 +vat

The Barcelona medium-back conference chair has a clearly defined structure, which is well known for its strong design elements and high functionality. With its 'L'-shaped armrest attached to perfectly with 'Y'-back support and bottom structure for light and elegance presence, allowing one to be cradled with comfort. This chair has practicality in an avant-garde design. Set on a classic 5-star black nylon base with height control, this would be an amazing addition to any meeting facility.



**C12** **Intouch**  
RRP: £235.00 +vat

The Intouch task chair offers a sleek yet simple lumbar system, plus a host of other practical features. All said, Intouch is a design-based ergonomic solution that gives users control of their own comfort and well-being. Set on a classic 5-star black nylon base with full ergonomic controls offers great value for money for any study or office space.



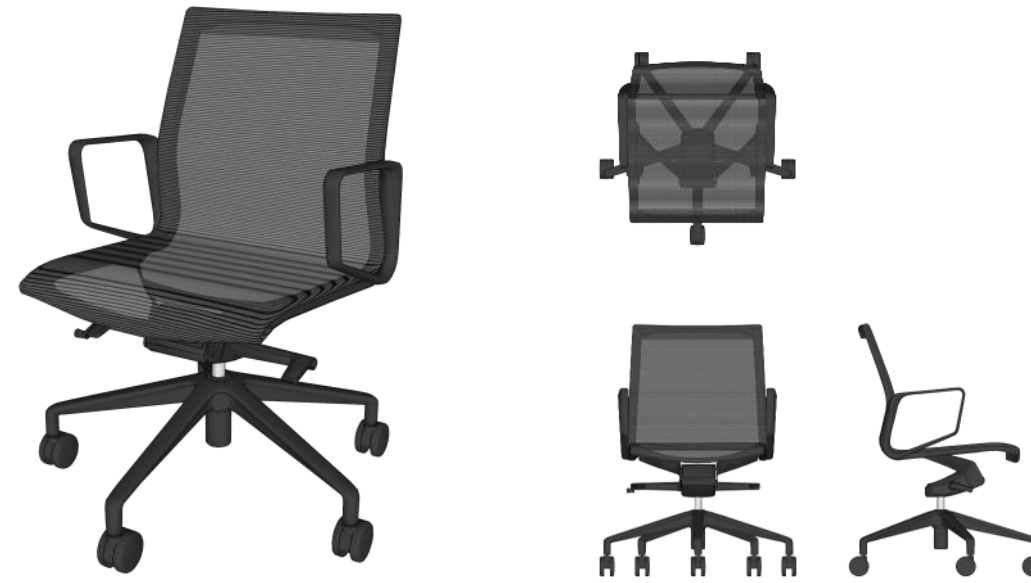
**C13** **Polygram Mesh (High Back)**  
RRP: £365.00 +vat

The Polygram Mesh (High Back) task chair with its ergonomic comfort that is not only breathable but also looks great too. The Polygram Mesh task chair is the perfect addition to your home office or business. It's modern, slim design is accompanied by a synchronised tilt and a wide range of adjustability options to get it just how you want it. Set on a classic 5-star black nylon base with 75mm PU castors.



**C14** **Polygram Mesh (Medium Back)**  
RRP: £335.00 +vat

The Polygram Mesh (Medium Back) task chair with its ergonomic comfort that is not only breathable but also looks great too. The Polygram Mesh task chair is the perfect addition to your home office or business. It's modern, slim design is accompanied by a synchronised tilt and a wide range of adjustability options to get it just how you want it. Set on a classic 5-star black nylon base with 75mm PU castors.



**C15** **Tango Chair (Wire & Wood Frame)**  
RRP: £175.00 +vat (Wood Frame RRP: £255.00 +vat)

With its visually striking Scandinavian design, this soft seating family member is perfect for any modern office. It exudes a chic vibe and looks just as nice in a traditional office space too. This chair has an expressive character, it provides improvisational freedom, and comes in different style variations with a range of fabric upholstery. Available in an epoxy coated wire-frame or a solid ash frame.



**C16** **Mobby Fold**  
RRP: £165.00 +vat

Mobby is a lively, mobile and unpretentious little fella with a colourful personality. You can easily move it around for an impromptu breakout session, or store them away when you need the space for something else. Eye-catching mesh-like shells in popular colour options gives a smart look to suit all venues, from seminar rooms to cafeteria. It's versatile enough to suit educational, teaming and conference applications.



**C17** **Lapis (Stacking Chairs)**  
RRP: £89.00 +vat

Lapis is a multi-purpose seating with high-density stacking capability - up to 40 chairs per sq m. can be stacked to save storage space. Its ultra-thin profile to enable dense stacking and visually displays Lapis' lightness and modern clean lines. Lapis utilises a one-piece or two-piece shell of coloured polypropylene moulded with an integrated hand grasp to ease portability.



**C18** **Zeus (Stacking Chairs)**  
RRP: £95.00 +vat

Zeus is a multipurpose chair which is perfect for multi-purpose areas and common spaces, such as a lecture room, training room, meeting room, and cafeteria. Its light-weight and durable steel frame are ideal for spaces which need reconfiguration constantly with a small footprint.



**C19** **Tango (High stool, Wire & Wood Frame)**  
RRP: £195.00 +vat (Wood Frame RRP: £335.00 +vat)

The Tango High stool stands out for its minimalist and clean refined lines as well as strong visual identity created by the Danish design. It has been created with the utmost attention to every detail. A characteristic feature of the TANGO furniture design is a special way that it creates the shape of a smile. It derives from a distinctive connection between the top and bottom parts of the chair. Available in an epoxy coated wire-frame or a solid ash frame.



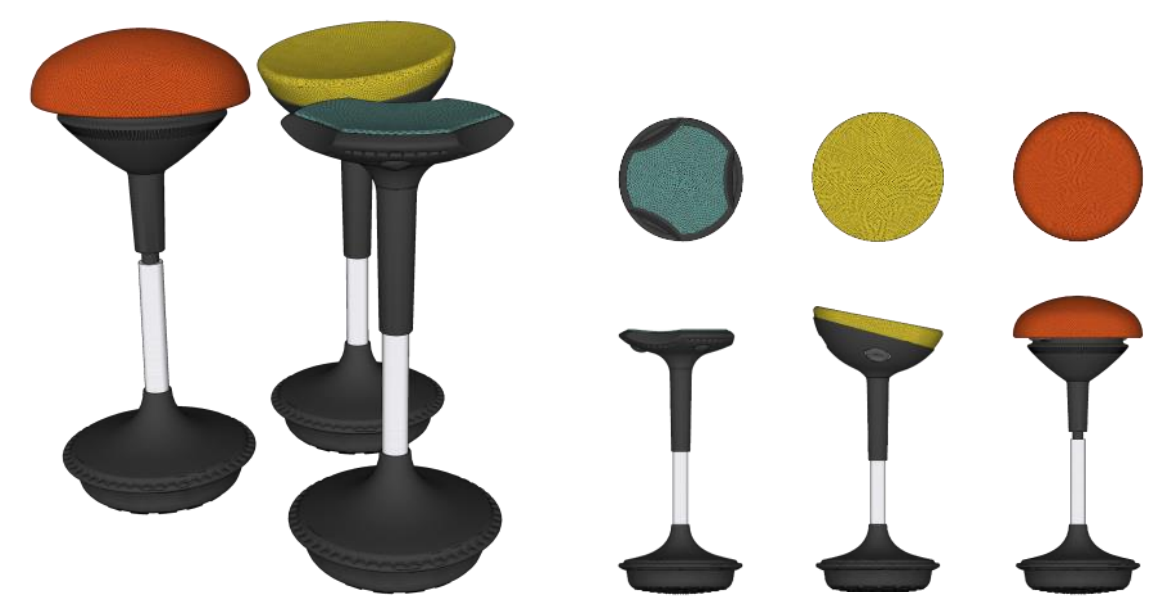
**C20** **Swing (Stool)**  
RRP: £145.00 +vat

Swing Neutral Spine The 135° open hip angle helps to rock the pelvis forward, creating a neutrally stacked lumbar. This serves as the foundation of a healthy spine posture. Fun & Function, the Swing combines both play and practicality for various types of spaces. Ideal for cafe areas, break room & gathering spaces.



**C21** **Sitool (Tilt Stools)**  
RRP: £105.00 +vat

Whether you are in a work or social environment, the Sitool provides you with engaging & comfortable user experience. Sitool's unique seat shape design was inspired by a sting ray's flying & unfettered motion. The user is unencumbered when changing positions or when getting on & off Sitool.



**C22** **Max (Lounge Seating)**  
RRP: £495.00 +vat (footstool RRP: £295.00 +vat)

The lightness of style, characterised by well-defined lines, makes Max stand out from the crowd. Accompanied by a footstool it turns into an elegant easy chair. Available with or without buttons, and with the choice of fabric or leather cover. The low armrest puts your arms in a natural, ergonomic position.



**C23** **Vegas (Lounge Seating)**  
RRP: £325.00 +vat

A settee style chair from our range with upholstered backrest and seat, with a sleek chrome or epoxy coated fire frame. Available in a wide range of fabric upholstery, this low slung and deep comfortable soft seat settee style chair is suitable for reception, waiting and breakout spaces.



**C24** **Avanti**  
RRP: £155.00 +vat

Alone or together, the Avanti can be linked together based on your space and usage needs. The sleek chrome metal frame of the Avanti will ensure your space looks professional and polished at all times. The seat and back consist of 50mm thick high-density foam on a 2 piece wood veneer shell structure.

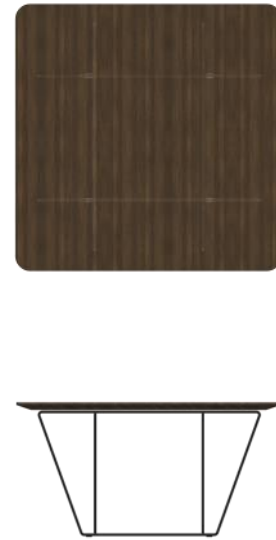


**A1** **Coffee Table**  
RRP: £295.00 +vat



This elegant coffee table is available in any size for the same price within the overall dimensions of 60/90cm x 60/90cm  
Typically the work surface is produced from a wide selection of MFC options, with a straight edge ABS lipping or an elegant reverse chamfer detail.  
The frame is constructed with a 8-bar wire-frame structure and powder coated in a hard wearing epoxy resins – multiple colours available.  
All tables can be supplied with flush surface power modules in a variety of UK, USB, or international plug socket combinations.

[multiple sizes available](#)



**A3** **Laptop Tables**  
RRP: £175.00 +vat



Our laptop tables have been designed to bring a contemporary convenience to your office or workplace.  
The robust metal frame is designed to slide under your armchair or sofa, taking up minimal floor space.  
Typically the work surface is produced from a wide selection of MFC options, with a straight edge ABS lipping or an elegant reverse chamfer detail.  
The frame is constructed with robust steel frame and powder coated in a hard wearing epoxy resins – multiple colours available.  
This is an ideal and amazing addition to any collaboration space or lounge area.

[multiple sizes available](#)



**A2** **Desktop Dividers**  
RRP: £120.00 + VAT (cost per unit)

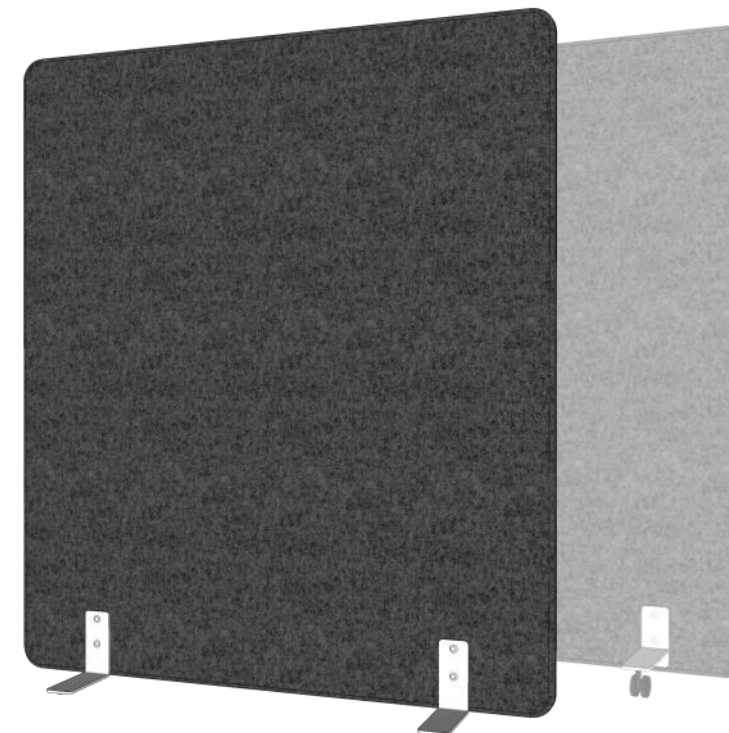


Social Distancing Desktop Dividers make it easy to section your workspaces to follow the social distancing guidelines. With the desktop dividers, you'll be able to clearly mark each individual space and create a personal desk allowing your establishment to resume business as usual.  
Using desktop dividers within an office can bring many advantages, not only for the office design for functionality and privacy. With the use of a desktop divider, you can add a privacy barrier to promote individual working to support productivity levels and increase concentration. At this time, desktop screens can also help social distancing providing each employee with a secure place to work.  
With different finishes, we're confident you'll find the right screen for your needs. From a range of different fabrics, desktop dividers can positively help your working spaces. Each of the desktop divider ranges can be custom made to suit the size of your existing desks and back screen or to support individual requirements and provide you and your staff with the desk support you need.

[multiple sizes available](#)

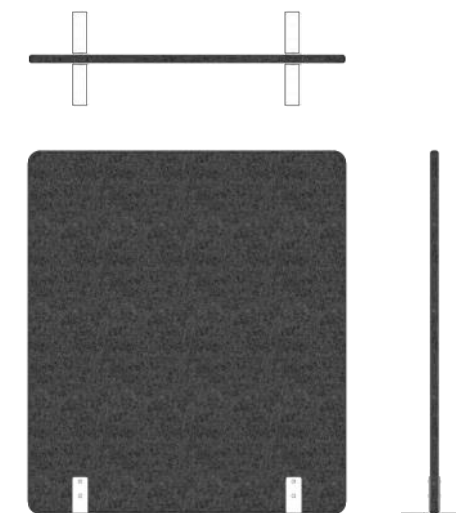


**A4** **Freestanding Acoustic Screen**  
RRP: £195.00 +vat (Feet RRP: £59.00 +vat | Pair 4 pieces)



Freestanding Acoustic Screens W-120cm x H-140cm are a great way to divide clusters of space. These variety of dividers come in many different sizes, used for privacy and discretion. Easily movable space dividing screens, quick and easy system for screen connection, and certified sound absorption - class C.  
The composition made of 16 mm chipboard, covered with 10 mm acoustic foam and upholstered with fabric.  
Legs are set of 4 metal legs with or without castors, Ø50mm.  
There is a wide range of colours, able to be customised to suit an office aesthetic or reflect a company's logo.

[multiple sizes & configurations available](#)

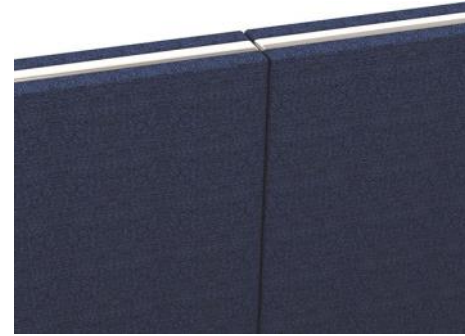


## Panel Profile



Rounded corner at the end of panel

## Panel Junction



Panel Type 1  
Panels are joined together by slotting



Panel Type 2  
Panel connector joins two panels together

## Panel Trim Finishes



Chrome

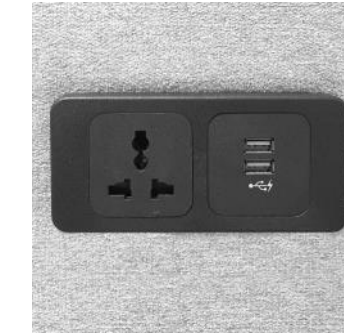


Grey

## Cable Management / Power and Data



Cable fed through base frame and out from frame work legs



Power and data can be provided to seating, panels and worktop tables

Our modular designs are a great way to have multiple configurations with the custom stylish component to your liking and suited for our client's needs and demands. With the variety of options for panels, this can be a mix and match to best accommodate the space needs.

Comfortability and looks are key for our designs of spaces. These can be set and arranged by different types of leg structure, base frame, types of base profile, profile finishes along with intricate details.

These new generations of products come in a different range of colours to suit any style of office space.

The elevated acoustic panels create a relaxing and reassuring atmosphere that is key for creating a work environment. These acoustic panels are all designed and composed of high-quality materials.

## Base Profile



Rounded edge frame and seating



90° degrees edges

## Base Colour



Epoxy white



All leg structures and panel frames comes with Epoxy coating to protect the structure this gives a clear and low glossy look.

## Base Profile Connector

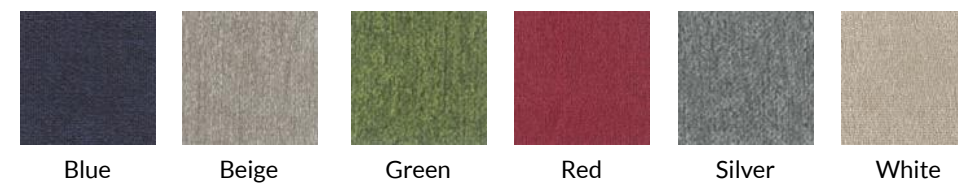


Chrome finish

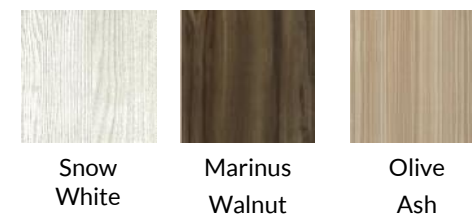


Epoxy finish

## Upholstery Finishes

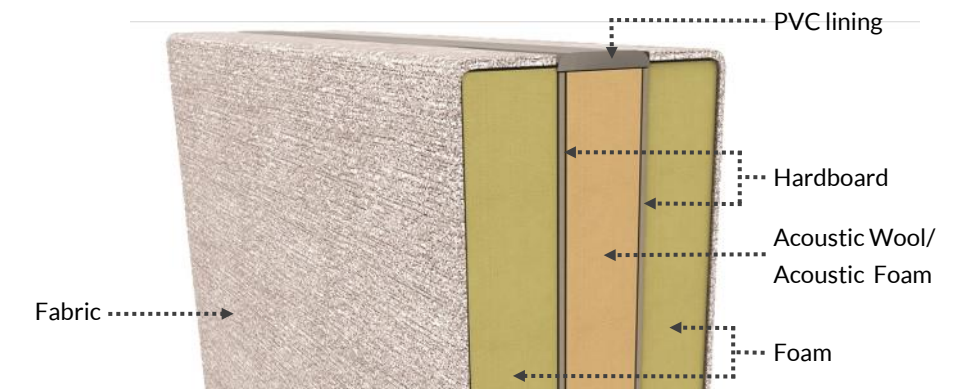


## Worktop Finishes



Workplace Designs has many upholstery and worktop finishes, are available in a range of colours mixes to enhance or contrast with the environment of your choices of space.

## Panel Cross Section



All images are for illustration purposes only. Colours shown may not be an accurate representation of the actual fabric colour, please request and reference to our samples for final confirmation.

# Workplace Designs

Architecture | Project Consultancy | Furniture | CAD & Graphics